

Sardana

AL POETA DE L'EMPORDÀ

Lluís Buscarons i Pastells

36-69

Ll. Buscà

"Al Poeta de l'Empordà"

Fluïd i tambori

Handwritten musical score for "Al Poeta de l'Empordà" by Ll. Buscà. The score is written on six staves. The first staff begins with a treble clef, a key signature of two flats (B-flat and E-flat), and a 4/4 time signature. The music consists of eighth and sixteenth notes, with some rests. Above the first staff, the word "tambori" is written. Above the second staff, the word "simil" is written. Above the third staff, the word "simil" is written. Above the fourth staff, the word "simil" is written. Above the fifth staff, the word "simil" is written. Above the sixth staff, the word "simil" is written. The score ends with a double bar line and a 36/69 measure count.

Ll. Buscà

"Al Poeta de l'Empordà"

tible 1^{er}

Handwritten musical score for "Al Poeta de l'Empordà" by Ll. Buscà. The score is written on five staves. The first staff begins with a treble clef, a key signature of two flats (B-flat and E-flat), and a 4/4 time signature. The music consists of eighth and sixteenth notes, with some rests. Above the first staff, the word "tible 1er" is written. Above the second staff, the word "solo" is written. Above the third staff, the word "solo" is written. Above the fourth staff, the word "solo" is written. Above the fifth staff, the word "solo" is written. The score ends with a double bar line and a 36/69 measure count.

Ll. Buscarón

"Al Poeta de l'Empordà"

table 2^{no}

Handwritten musical score for guitar, titled "Al Poeta de l'Empordà" by Ll. Buscarón. The score is written on six staves. The first staff has a treble clef, key signature of one flat, and a 4/4 time signature. The second staff has a 2/8 time signature and a double bar line. The third staff has a 1/4 time signature and a double bar line. The fourth staff has a 6/8 time signature and a double bar line. The fifth staff has a 2/4 time signature and a double bar line. The sixth staff has a 3/4 time signature and a double bar line. The score includes various musical notations such as notes, rests, and dynamic markings.

Buscarón

"Al Poeta de l'Empordà"

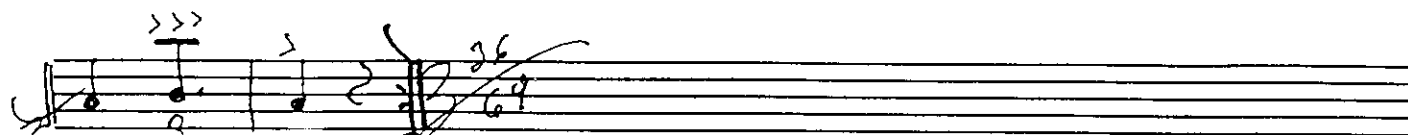
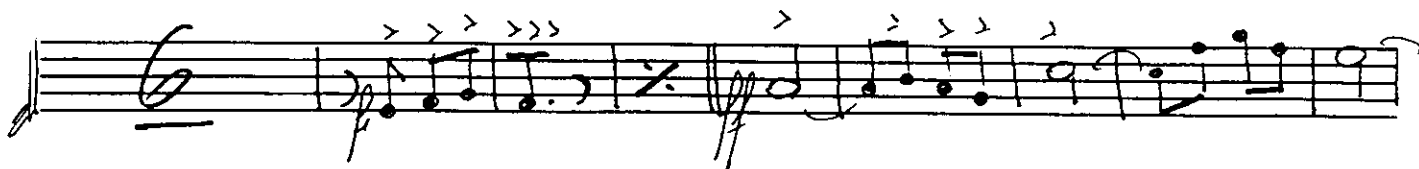
tenor 1^{er}

Handwritten musical score for tenor, titled "Al Poeta de l'Empordà" by Buscarón. The score is written on six staves. The first staff has a treble clef, key signature of one flat, and a 4/4 time signature. The second staff has a 2/4 time signature and a double bar line. The third staff has a 1/4 time signature and a double bar line. The fourth staff has a 2/4 time signature and a double bar line. The fifth staff has a 3/4 time signature and a double bar line. The sixth staff has a 3/4 time signature and a double bar line. The score includes various musical notations such as notes, rests, and dynamic markings.

Ll. Buscaron

"Al Poeta de l'Empordà"

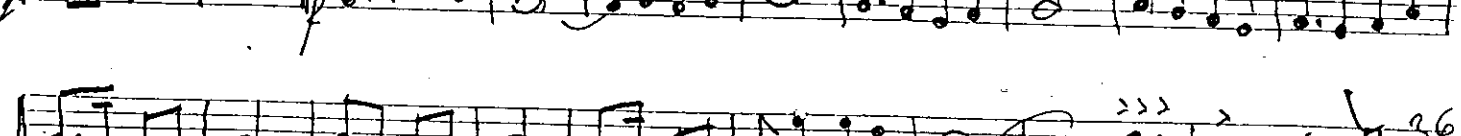
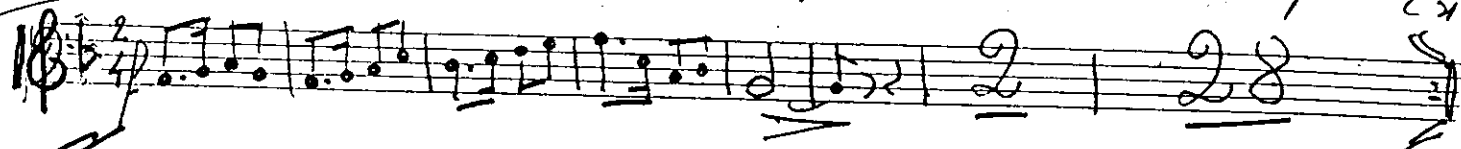
tenor 2^{on}



Ll. Buscaron

"Al Poeta de l'Empordà"

Trompeta fa (x16)



Buscaron

"Al Poeta de l'Emporda"

trumpeta 2^a sib

Handwritten musical score for Trumpet 2 in B-flat. The score consists of six staves. The first staff begins with a treble clef, a key signature of one flat (B-flat), and a 2/4 time signature. The music is written in a melodic style with various note values and rests. The second staff continues the melody. The third staff features a large '8' below the staff, indicating a measure rest. The fourth staff continues the melody. The fifth staff features a large '6' below the staff, indicating a measure rest. The sixth staff concludes the piece with a final cadence and a double bar line.

Buscaron

"Al Poeta de l'Emporda"

Trombo 1^a

Handwritten musical score for Trombone 1. The score consists of six staves. The first staff begins with a bass clef, a key signature of one flat (B-flat), and a 2/4 time signature. The music is written in a melodic style with various note values and rests. The second staff continues the melody. The third staff features a large '8' below the staff, indicating a measure rest. The fourth staff continues the melody. The fifth staff features a large '6' below the staff, indicating a measure rest. The sixth staff concludes the piece with a final cadence and a double bar line.

Buscaro

Al Toeta de l'Empordà

Fiscor 1^a

Handwritten musical score for Fischor 1^a. The score is written on ten staves. The first staff begins with a treble clef, a key signature of two flats (B-flat and E-flat), and a 3/4 time signature. The music consists of a series of eighth and sixteenth notes, with some rests and dynamic markings. The score includes various musical notations such as slurs, ties, and repeat signs. The final measure of the first system is marked with a double bar line and a repeat sign. The second system continues the melody with similar rhythmic patterns. The third system features a key change to one flat (B-flat) and a 2/4 time signature. The fourth system includes a key change to one sharp (F-sharp) and a 2/4 time signature. The fifth system continues the melody with a key change to two sharps (F-sharp and C-sharp) and a 2/4 time signature. The sixth system includes a key change to two sharps (F-sharp and C-sharp) and a 2/4 time signature. The seventh system continues the melody with a key change to two sharps (F-sharp and C-sharp) and a 2/4 time signature. The eighth system includes a key change to two sharps (F-sharp and C-sharp) and a 2/4 time signature. The ninth system continues the melody with a key change to two sharps (F-sharp and C-sharp) and a 2/4 time signature. The tenth system concludes the piece with a key change to two sharps (F-sharp and C-sharp) and a 2/4 time signature.

Buscaro

"Al Toeta de l'Empordà"

Fiscor 2^a

Handwritten musical score for Fischor 2^a. The score is written on ten staves. The first staff begins with a treble clef, a key signature of two flats (B-flat and E-flat), and a 3/4 time signature. The music consists of a series of eighth and sixteenth notes, with some rests and dynamic markings. The score includes various musical notations such as slurs, ties, and repeat signs. The final measure of the first system is marked with a double bar line and a repeat sign. The second system continues the melody with similar rhythmic patterns. The third system features a key change to one flat (B-flat) and a 2/4 time signature. The fourth system includes a key change to one sharp (F-sharp) and a 2/4 time signature. The fifth system continues the melody with a key change to two sharps (F-sharp and C-sharp) and a 2/4 time signature. The sixth system includes a key change to two sharps (F-sharp and C-sharp) and a 2/4 time signature. The seventh system continues the melody with a key change to two sharps (F-sharp and C-sharp) and a 2/4 time signature. The eighth system includes a key change to two sharps (F-sharp and C-sharp) and a 2/4 time signature. The ninth system continues the melody with a key change to two sharps (F-sharp and C-sharp) and a 2/4 time signature. The tenth system concludes the piece with a key change to two sharps (F-sharp and C-sharp) and a 2/4 time signature.

Buscaron

"Al Poeta de l'Empordà"

Contrabaix

