

Crumbò

180

Sardanes



= L' Aplec de Sant Bartomeu =
= Crit de Patria =

Sol Mtre.
Antoni Botey

PROPIETAT
DE
PERE BIGAS

A. Botey - = L' Aplec de Sant Bartomeu =

Flabiol



A. Botey -

= L'Aples de Sant Bartomeu =

Birole I

Handwritten musical score for Birole I. The score is written on ten staves. It begins with a treble clef and a key signature of one sharp (F#). The music features a variety of rhythmic patterns, including eighth and sixteenth notes, and rests. A measure rest is indicated by a '1' over a staff. A double bar line with repeat dots appears on the fourth staff. The number '28' is written above the sixth staff. The score concludes with a double bar line and a repeat sign. A circular library stamp from 'BIBLIOTHECA MUNICIPAL DE BARCELONA' is visible in the bottom right corner.

A. Botey -

= L'Aples de Sant Bartomeu =

Birole II

Handwritten musical score for Birole II. The score is written on ten staves. It begins with a treble clef and a key signature of one sharp (F#). The music features a variety of rhythmic patterns, including eighth and sixteenth notes, and rests. A measure rest is indicated by a '1' over a staff. A double bar line with repeat dots appears on the fourth staff. The number '5' is written above the sixth staff, and the number '36' is written above the seventh staff. The score concludes with a double bar line and a repeat sign. A circular library stamp from 'BIBLIOTHECA MUNICIPAL DE BARCELONA' is visible in the bottom right corner.

A. Botey - = L'Aples de Sant Bartomeu =

Genor I



A. Botey - = L'Aples de Sant Bartomeu =

Genor II



A. Botey -

= L'Aplec de Sant Bartomeu =

Trompeta I

Handwritten musical score for Trompeta I, titled "L'Aplec de Sant Bartomeu" by A. Botey. The score is written on ten staves. The first staff begins with a treble clef, a key signature of one sharp (F#), and a 2/4 time signature. The music features a variety of note values, including eighth and sixteenth notes, and rests. A repeat sign with first and second endings is present on the fourth staff. The word "Trombá" is written below the sixth staff. A blue circular library stamp from "BIBLIOTHECA MUNICIPAL DE BADALONA" is located on the right side of the page.

A. Botey -

= L'Aplec de Sant Bartomeu =

Trompeta II

Handwritten musical score for Trompeta II, titled "L'Aplec de Sant Bartomeu" by A. Botey. The score is written on ten staves. The first staff begins with a treble clef, a key signature of one sharp (F#), and a 2/4 time signature. The music features a variety of note values, including eighth and sixteenth notes, and rests. A repeat sign with first and second endings is present on the fourth staff. The word "Trombá" is written below the sixth staff. A blue circular library stamp from "BIBLIOTHECA MUNICIPAL DE BADALONA" is located on the right side of the page.

a. Botey - "L'Aplec de Sant Bartomeu" Trombo

15 6 12 10

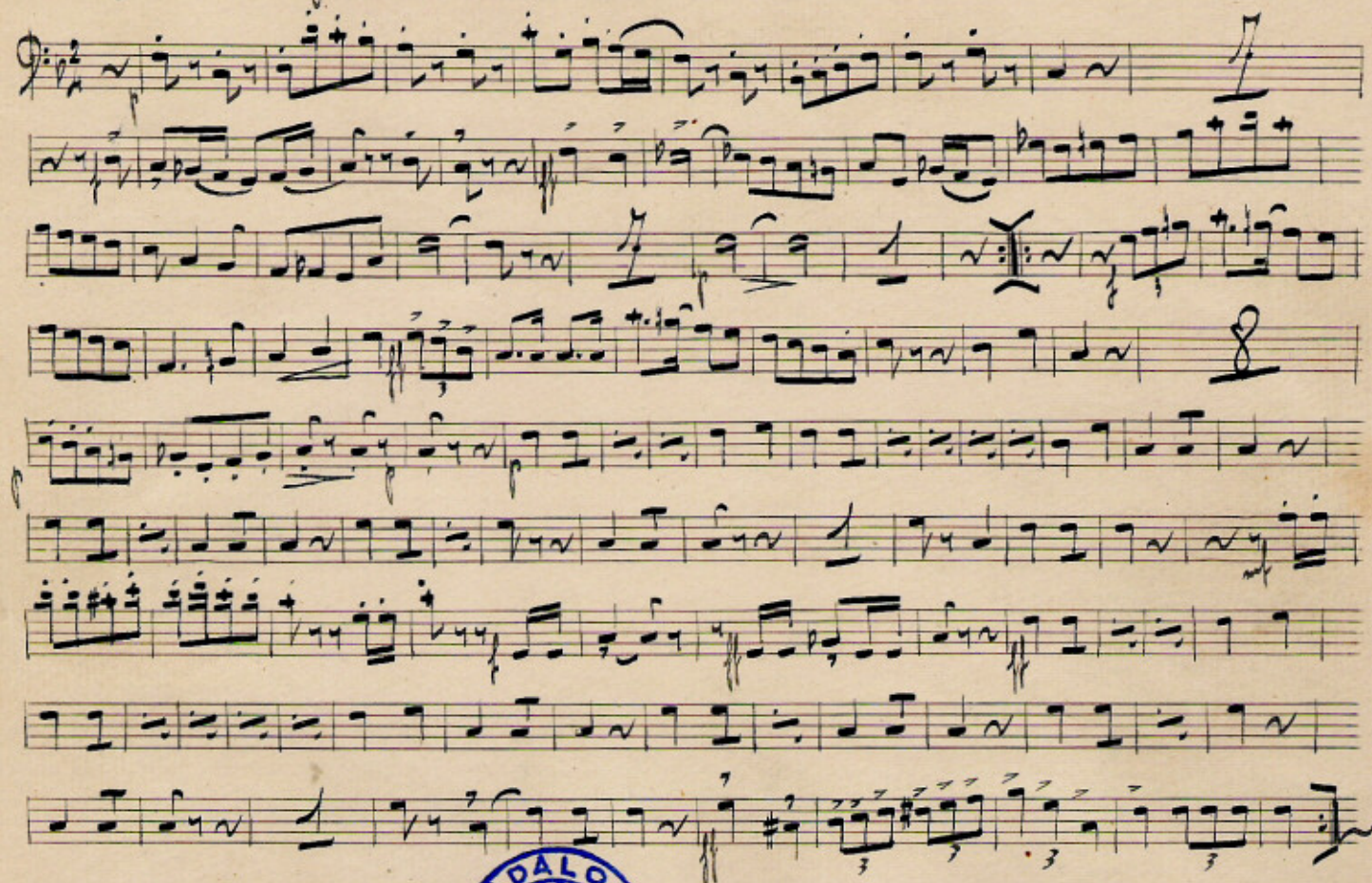
BIBLIOTHECA MUSEI BARCELONENSIS

a. Botey - "L'Aplec de Sant Bartomeu" Fiscorn I

BIBLIOTHECA MUSEI BARCELONENSIS

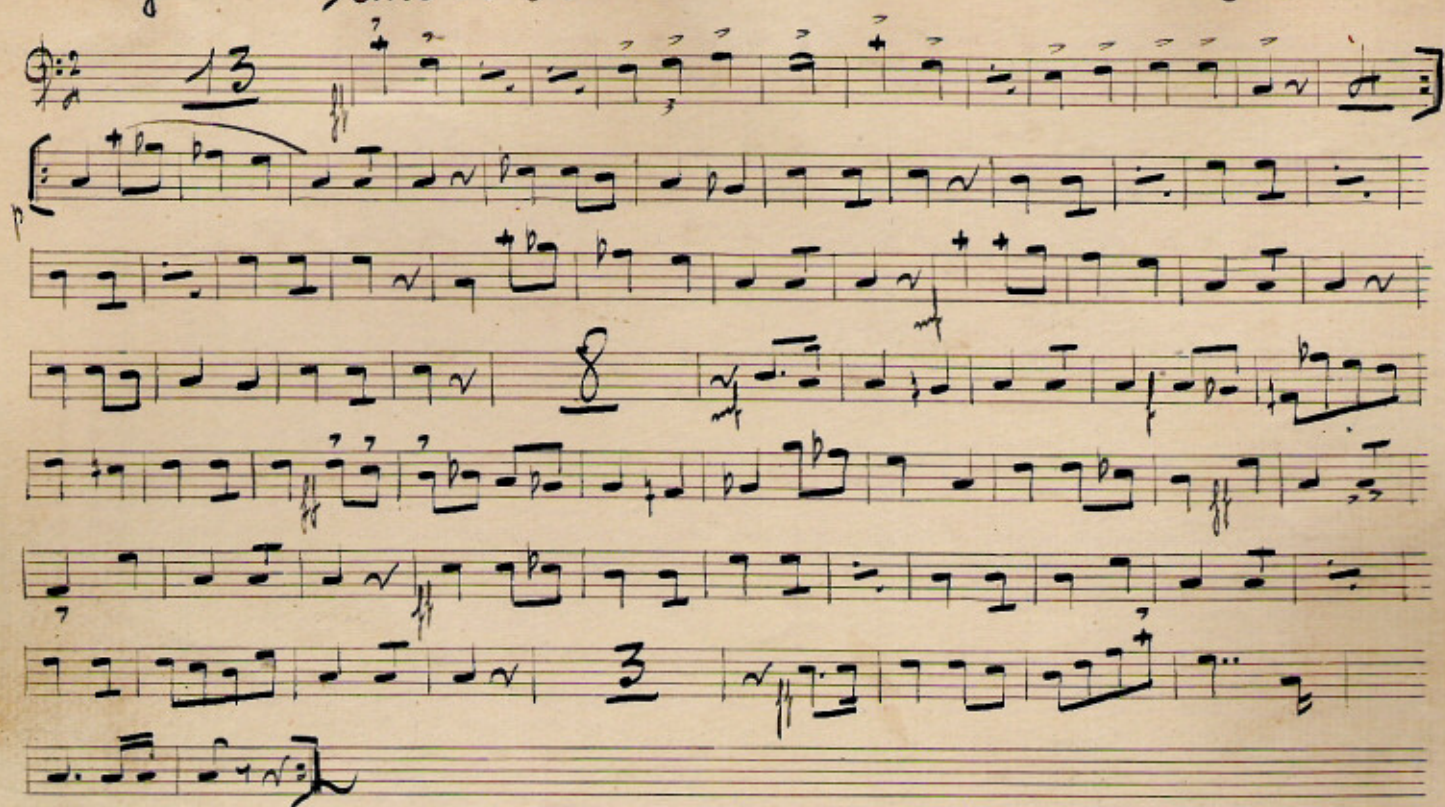
A. Botey - = L'Aphec de Sant Bartomeu =

Fiscorn II



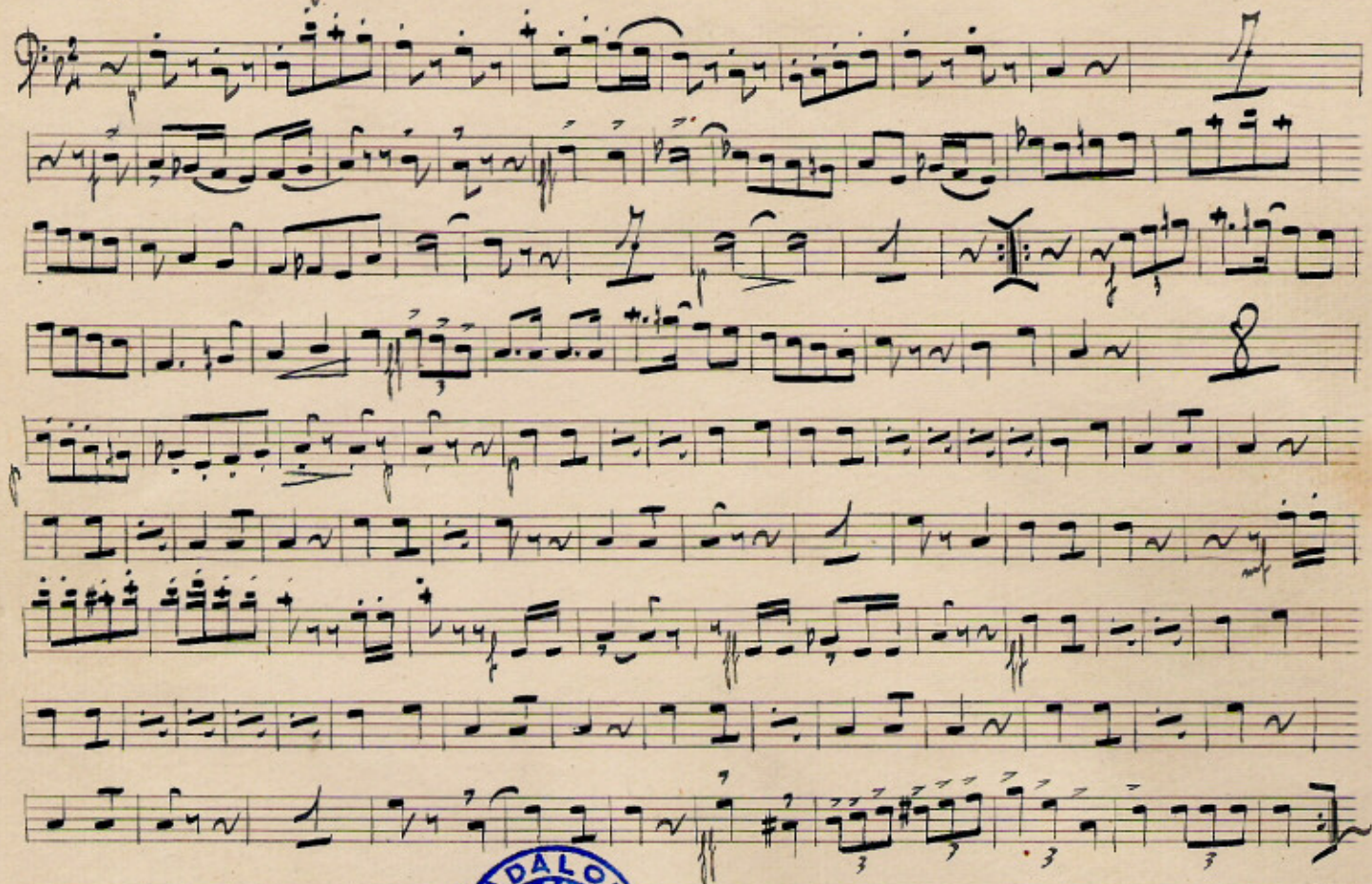
A. Botey - = Crit de Patria =

C. Baix



A. Botey - L'Aples de Sant Bartomeu =

Fiscorn II



A. Botey - L'Aples de Sant Bartomeu =

P. Baix

