

SARDANA

TITOL LA VALL DE POMAR

AUTOR . EN RAMON SALSAS i BLANCH

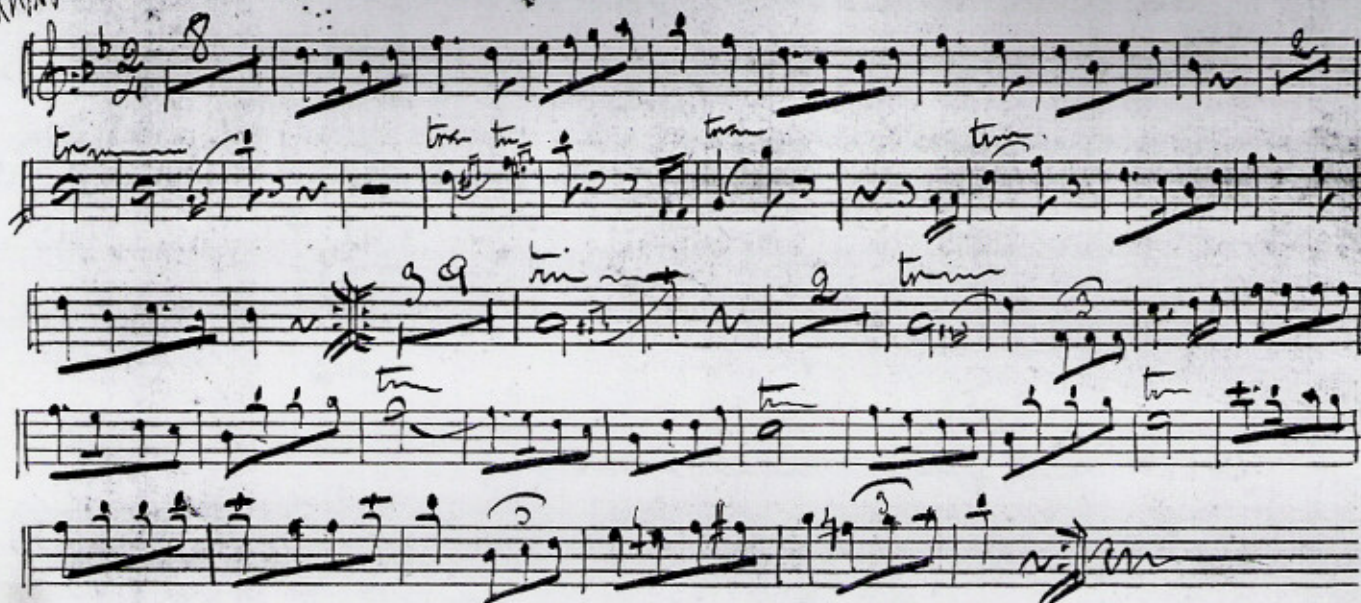
ESTRENAON EL

DEDICADA A LA VALL DE POMAR (BADALONA)

SARDANA

LA VALL de POMAR

Pluvial



R. Salsas

La Vall de Pamar

Tiple I

Handwritten musical score for Tiple I of 'La Vall de Pamar'. The score is written on seven staves. The first staff begins with a treble clef, a key signature of one flat (B-flat), and a time signature of 8/8. The music features a mix of eighth and sixteenth notes, with some measures containing rests. The score includes measure numbers 4, 10, and 15. The notation is fluid and characteristic of handwritten musical manuscripts.

4/4/4/4

LA VALL de PAMAR

Tiple 2^a

Handwritten musical score for Tiple 2 of 'LA VALL de PAMAR'. The score is written on five staves. The first staff begins with a treble clef, a key signature of one flat (B-flat), and a time signature of 8/8. The music continues with eighth and sixteenth notes. The score includes measure numbers 7 and 39. There are handwritten annotations: 'creixen' above the third staff and 'ff sempre' below the fourth staff. The notation is consistent with the first page.

[Handwritten signature]

"A VAM de POMAR"

Tenor I

Soprano

Handwritten musical score for Soprano. The score is written on a single staff with a treble clef and a key signature of one sharp (F#). It begins with a tempo marking of 8. The music features a variety of note values, including eighth and sixteenth notes, and rests. There are several dynamic markings: *F* (forte) at the beginning, *ff* (fortissimo) later, and *ff sempre* (fortissimo sempre) towards the end. A measure number of 13 is indicated. The piece concludes with a double bar line and a final note. The signature "R. Sabas." is written at the bottom right of the staff.

"A VAM de POMAR"

Tenor II

Soprano

Handwritten musical score for Tenor II. The score is written on a single staff with a treble clef and a key signature of one sharp (F#). It begins with a tempo marking of 8. The music features a variety of note values, including eighth and sixteenth notes, and rests. There are several dynamic markings: *F* (forte) at the beginning, *ff* (fortissimo) later, and *ff sempre* (fortissimo sempre) towards the end. A measure number of 25 is indicated. The piece concludes with a double bar line and a final note. The signature "R. Sabas." is written at the bottom right of the staff.

SARIN

"LA VALLÉE DE POMER"

Cornet 1^{er} en Si

Handwritten musical score for Cornet 1 in Si. The score consists of seven staves of music. The first staff begins with a treble clef, a key signature of one sharp (F#), and a time signature of 8/8. The music is written in a melodic style with various note values and rests. The second staff includes a measure with a '2' above it. The third staff has a 'P.' (piano) marking. The fourth staff has a '6' above it. The fifth staff has a '6' above it. The sixth staff has a 'creux' marking. The seventh staff has a 'F.F. sempre' marking. The score ends with a double bar line and a signature 'R. Sebass'.

SARIN

"LA VALLÉE DE POMER"

Cornet 2^{er} en Si

Handwritten musical score for Cornet 2 in Si. The score consists of seven staves of music. The first staff begins with a treble clef, a key signature of one sharp (F#), and a time signature of 8/8. The music is written in a melodic style with various note values and rests. The second staff includes a measure with a '2' above it. The third staff has a 'P.' (piano) marking. The fourth staff has a '6' above it. The fifth staff has a '6' above it. The sixth staff has a 'creux' marking. The seventh staff has a 'F.F. sempre' marking. The score ends with a double bar line and a signature 'R. Sebass'.

SARDANA

LA RAM DE POMAR

FISCORN 1^{er}

Handwritten musical score for Fisorn 1^{er}. The score is written on six staves. It begins with a treble clef, a key signature of one flat (B-flat), and a 2/4 time signature. The music features various dynamics including *F* (forte), *mf* (mezzo-forte), and *p* (piano). There are several slurs and ties. A section of the score is marked with a double bar line and the number 12, followed by a sequence of notes labeled 1-2-3-4-5-6-7-8-9. The word "creixen" is written below the staff. The score concludes with a double bar line and a fermata. The signature "R. Llorens" is written below the staves.

LA RAM DE POMAR

FISCORN 2^{on}

Handwritten musical score for Fisorn 2^{on}. The score is written on six staves. It begins with a treble clef, a key signature of one flat (B-flat), and a 2/4 time signature. The music features various dynamics including *F* (forte), *mf* (mezzo-forte), and *p* (piano). There are several slurs and ties. A section of the score is marked with a double bar line and the number 17, followed by a sequence of notes labeled 1-2-3-4. The word "creixen" is written below the staff. The score concludes with a double bar line and a fermata. The signature "R. Llorens" is written below the staves.

SARDANA

La Vall de Tormar.

C. Baix

mf.

mf.

p.

1 2 3 4 5 6 7 8 9

crescen

FF

FF sempre

R. Septal

PARTITURA PER A PIANO

SARDANA

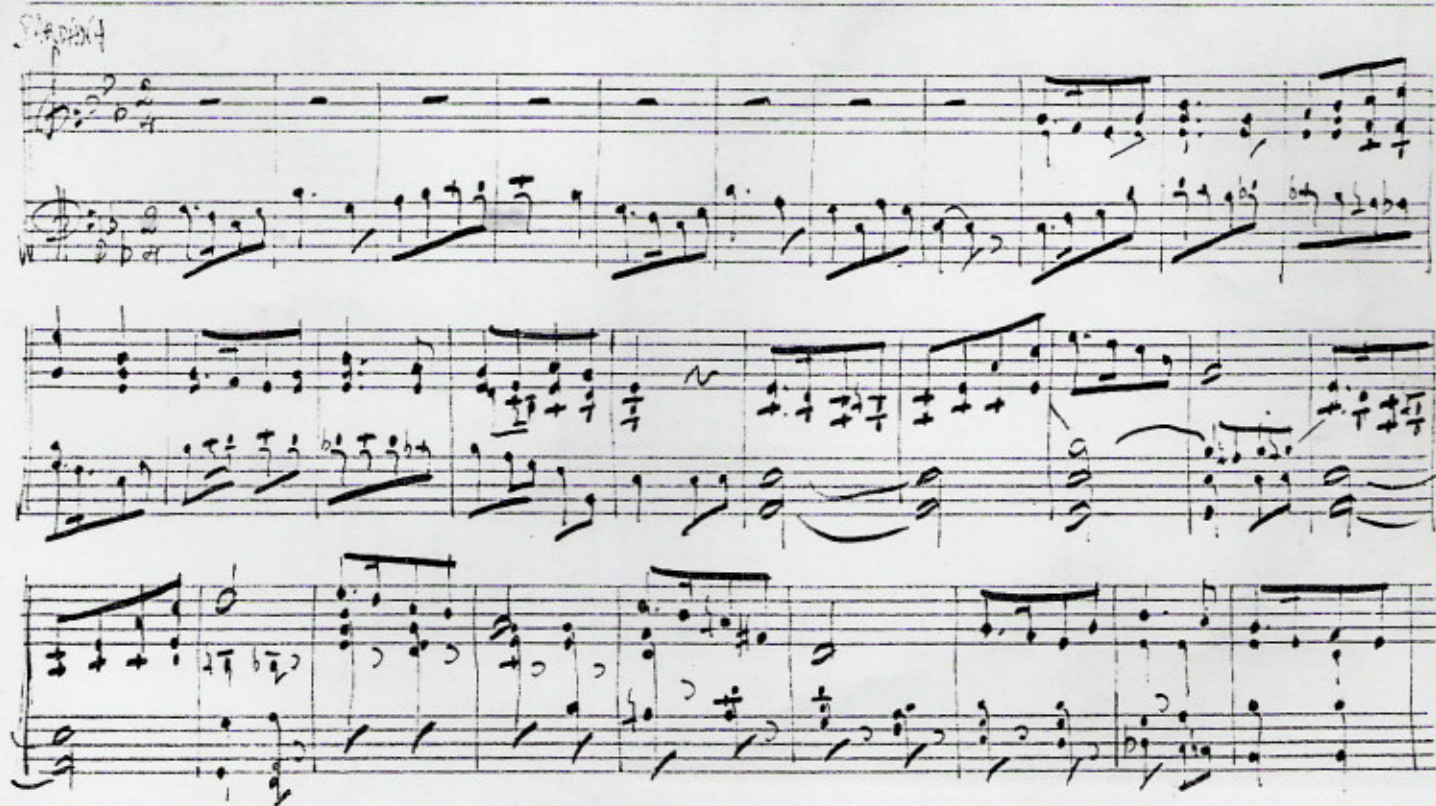
TITOL LA VALL DE POMAR

AUTOR . EN RAMON SALSAS I BLANCH

ESTRENADA EL

DEDICADA A LA VALL DE POMAR (BADALONA)

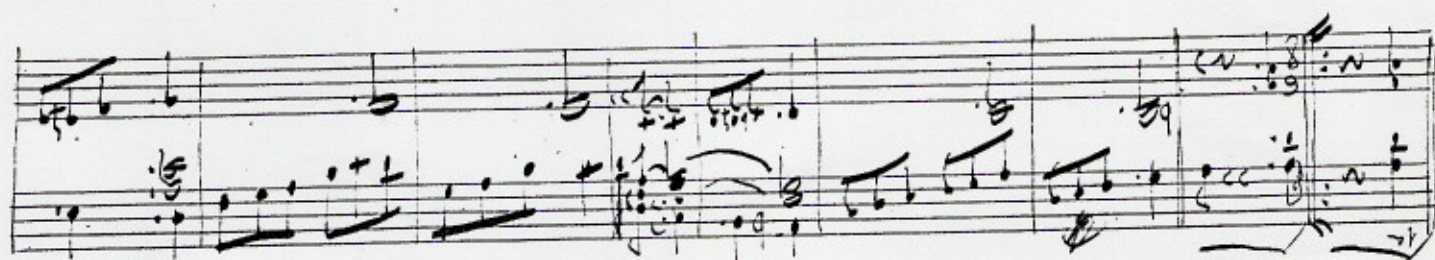
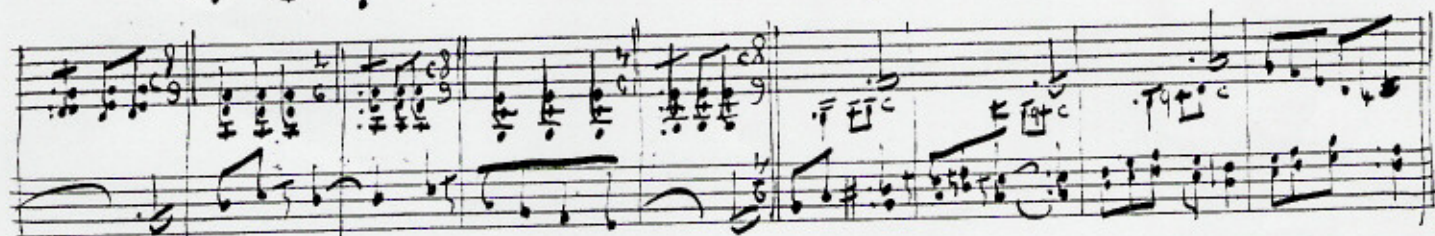
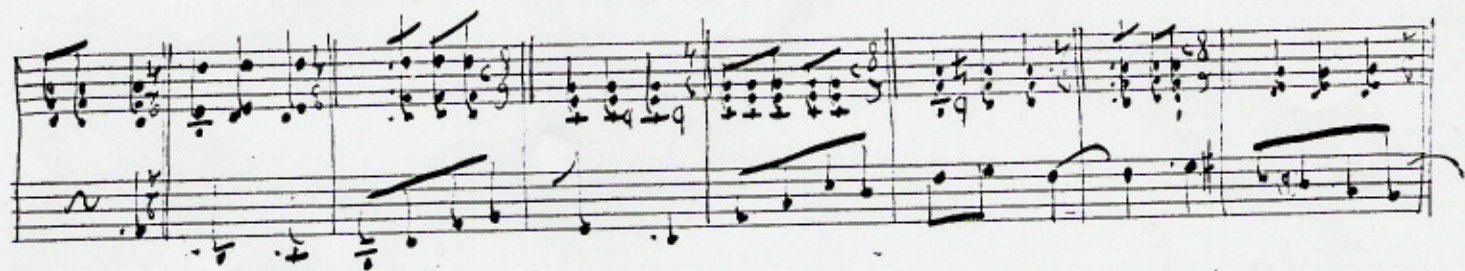
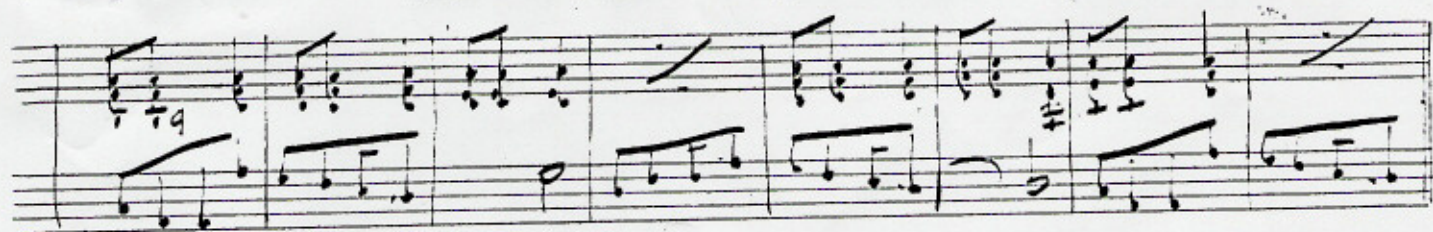
LA VALL DE POMAR *reducció per Piano.* R. SALSAS



R. SALSAS

LA VALL DE POMAR

(PIANO) SARDANA



R. SALSAS.

LA VALL DE POMAR

REDUCCIÓ PIANO
SARDANA

