

1194

139

R.

PONCELLINA — 29/78

SARDANES

D'EN

JOSÉ SARDANES

Propiedad

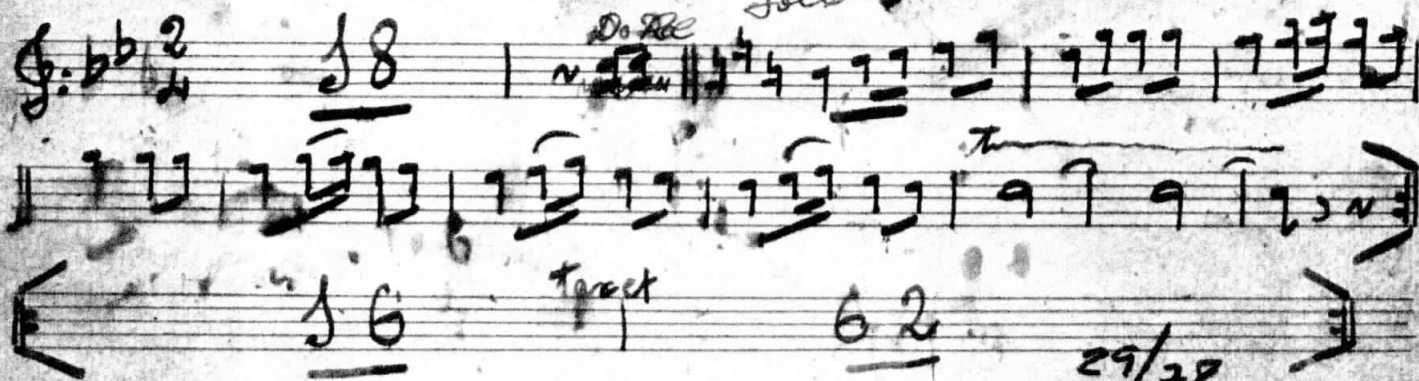
PROPIETAT

(Signature)

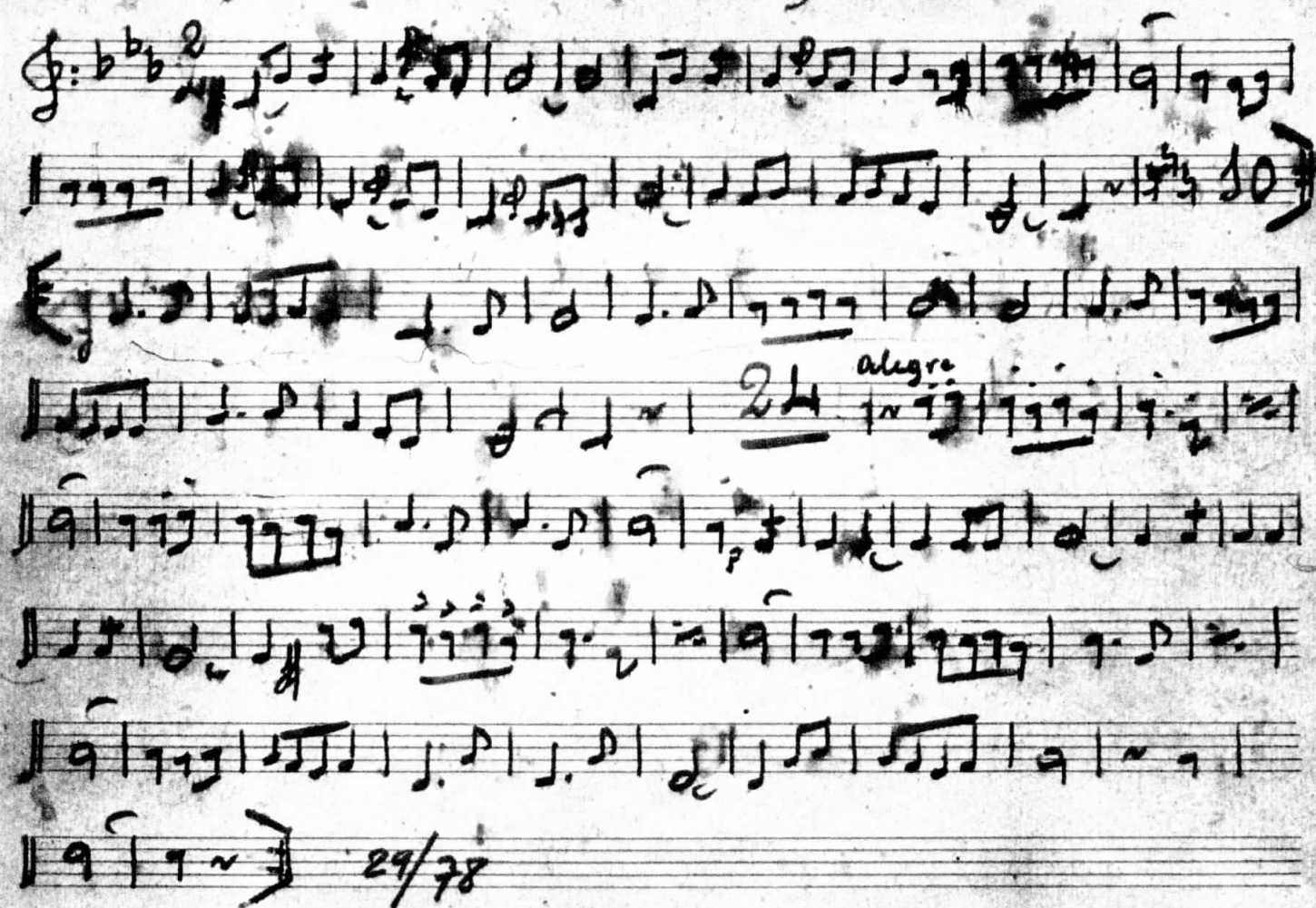
PERE BIGAS

SARDANA PONCELLINA

FLAUTA



29/78



Handwritten musical score for a vocal part, likely Soprano or Alto. The notation is in G major (one sharp) and 2/4 time. The score consists of 10 staves. The first staff begins with a treble clef and a key signature of one sharp (F#). The music features various note values, including eighth and sixteenth notes, and rests. There are several dynamic markings, including *pp* (pianissimo) and *ppp* (pianissimissimo). The score concludes with a double bar line and the number 29/78.

Handwritten musical score for a vocal part, likely Tenor. The notation is in G major (one sharp) and 2/4 time. The score consists of 10 staves. The first staff begins with a treble clef and a key signature of one sharp (F#). The music features various note values, including eighth and sixteenth notes, and rests. There are several dynamic markings, including *pp* (pianissimo) and *ppp* (pianissimissimo). The score concludes with a double bar line and the number 29/78.

Handwritten musical score for Tenor 2, featuring a treble clef, key signature of two flats (B-flat and E-flat), and a 2/4 time signature. The score consists of eight staves of music, including a key signature change to one sharp (F#) on the third staff. The notation includes various musical symbols such as notes, rests, and dynamic markings like *pp* (pianissimo). The piece concludes with a double bar line and the date 29/78.

SARDANA PONCELLINA

Handwritten musical score for Cornets 2, featuring a treble clef, key signature of two flats (B-flat and E-flat), and a 2/4 time signature. The score consists of seven staves of music, including a key signature change to one sharp (F#) on the third staff. The notation includes various musical symbols such as notes, rests, and dynamic markings like *pp* (pianissimo). The piece concludes with a double bar line and the date 29/78.

Handwritten musical score for a single staff, likely a piano or guitar accompaniment. The key signature is two flats (B-flat and E-flat), and the time signature is 2/4. The music consists of a series of eighth and sixteenth notes, with some rests and dynamic markings. The score is written on a single staff with a treble clef. The notation includes various musical symbols such as notes, rests, and bar lines. The piece concludes with a double bar line and the number 29/38.

Handwritten musical score for a Trombone part. The title is "SARDANA PONCELLINA" and the instrument is "TROMBA". The key signature is two flats (B-flat and E-flat), and the time signature is 2/4. The music consists of a series of eighth and sixteenth notes, with some rests and dynamic markings. The score is written on a single staff with a bass clef. The notation includes various musical symbols such as notes, rests, and bar lines. The piece concludes with a double bar line and the number 29/38.

SARDANA PONCELLINA

FISCORN 1^o

Handwritten musical score for Fisorn 1. The score is written on ten staves. It begins with a treble clef, a key signature of three flats (B-flat, E-flat, A-flat), and a 2/4 time signature. The notation includes various rhythmic values (quarter, eighth, and sixteenth notes), rests, and dynamic markings. There are some corrections and annotations throughout the piece.

29/78

SARDANA PONCELLINA

FISCORN 2^o

Handwritten musical score for Fisorn 2. The score is written on eight staves. It begins with a treble clef, a key signature of three flats (B-flat, E-flat, A-flat), and a 2/4 time signature. The notation includes various rhythmic values (quarter, eighth, and sixteenth notes), rests, and dynamic markings. There are some corrections and annotations throughout the piece.

29/78

SARDANA

PRINCELLINA

BAIX

Handwritten musical score for a piece titled "SARDANA PRINCELLINA" by "BAIX". The score is written on ten staves. The first staff shows the title and the instrument name. The second staff begins with a treble clef, a key signature of one flat (B-flat), and a time signature of 2/4. The notation includes various musical symbols such as notes, rests, and accidentals. There are several annotations in the score: "2. Prin" above the second staff, "arc" above the fourth staff, "Prin" above the sixth staff, and "pp" below the sixth staff. The score concludes with a double bar line and the date "29/78" written at the bottom right.