

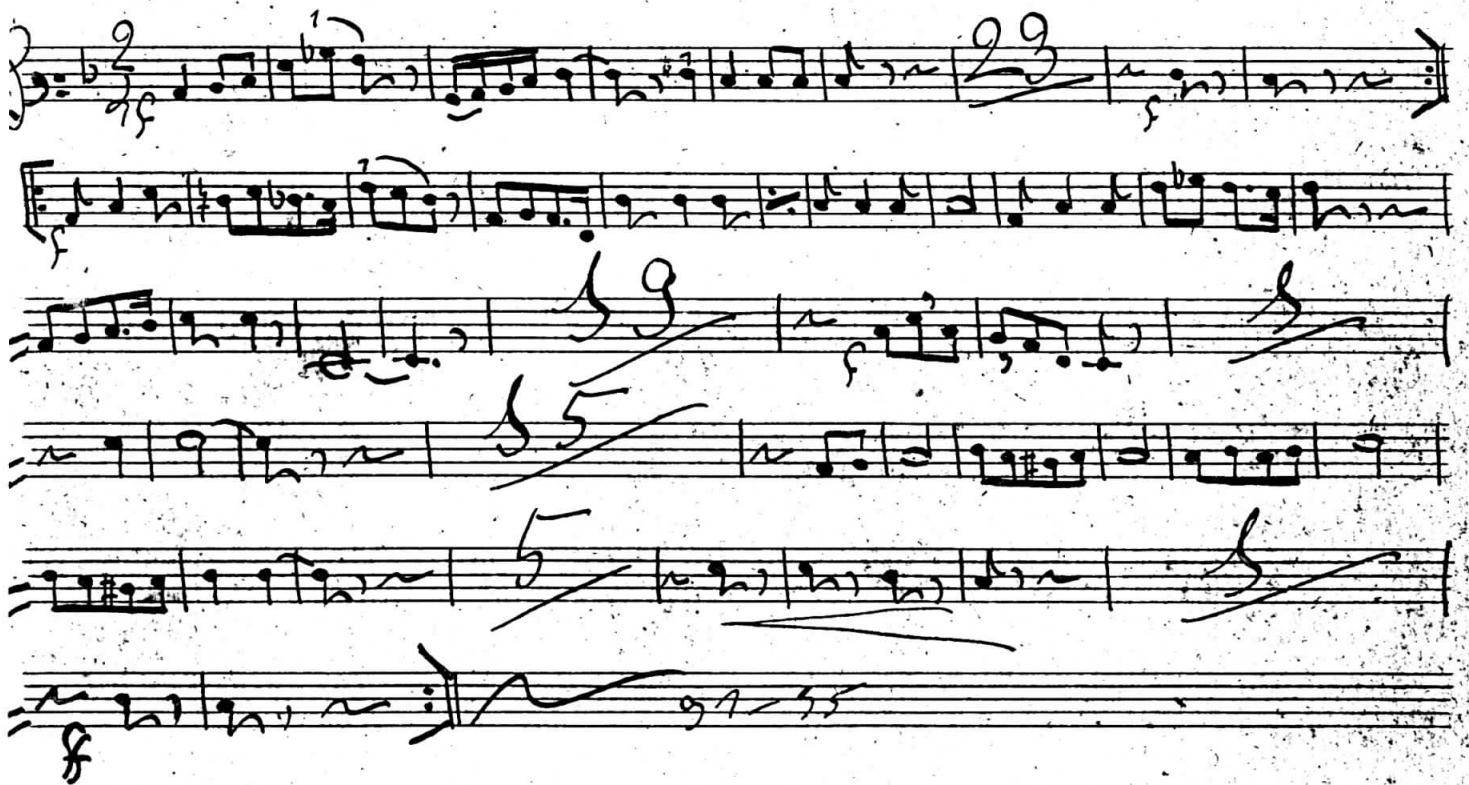
LD FONT DEL FERRO

Lluis Cotocho Güell

La "Font del Ferro" "Harmon"



"La Font del Ferro" Page 20



"La Font del Furo" Triple 1^o



"La Font del Furo" Binocular 1^o



"La Vont del Ferro" Venar 2^o

Handwritten musical score for "La Vont del Ferro" (Venar 2^o). The score is written on six staves. The first staff begins with a treble clef, a 2/4 time signature, and a key signature of one sharp (F#). The music features a variety of note values, including eighth and sixteenth notes, and rests. Dynamics such as *p* (piano) and *f* (forte) are indicated. Fingerings are marked with numbers 1 through 5. The piece concludes with a double bar line and the number 34-35.

"La Vont del Ferro" Trompeta 2^o

Handwritten musical score for "La Vont del Ferro" (Trompeta 2^o). The score is written on six staves. The first staff begins with a treble clef, a 2/4 time signature, and a key signature of one sharp (F#). The music features a variety of note values, including eighth and sixteenth notes, and rests. Dynamics such as *p* (piano) and *f* (forte) are indicated. Fingerings are marked with numbers 1 through 5. The piece concludes with a double bar line and the number 34-35.

"La Pont del Ferro"

Brombeles 123

Handwritten musical score for "La Pont del Ferro" by Brombeles. The score is written on seven staves. The first staff begins with a treble clef, a key signature of one sharp (F#), and a 2/4 time signature. The music features various dynamics including *pp*, *mf*, *f*, and *ff*. Fingerings are indicated by numbers 1 through 5. The piece concludes with a double bar line and the number 91-95.

"La Pont del Ferro"

Brombo

Handwritten musical score for "La Pont del Ferro" by Brombo. The score is written on seven staves. The first staff begins with a treble clef, a key signature of one sharp (F#), and a 2/4 time signature. The music features various dynamics including *ff*, *p*, and *f*. Fingerings are indicated by numbers 1 through 5. The piece concludes with a double bar line and the number 91-95.

"La Pont del Ferro" Piscorn 1^{er}

Handwritten musical score for the first part of "La Pont del Ferro" for Piccolo. The score is written on six staves. The first staff begins with a treble clef, a key signature of one flat (B-flat), and a 2/4 time signature. The music is characterized by rapid sixteenth-note passages, often beamed together in groups of five or six. Dynamic markings include *pp* (pianissimo) and *p* (piano). The piece concludes with a double bar line and a fermata. The number "54-55" is written at the bottom right of the sixth staff.

"La Pont del Ferro" Piscorn 2^e

Handwritten musical score for the second part of "La Pont del Ferro" for Piccolo. The score is written on six staves. It continues the musical style of the first part, featuring intricate sixteenth-note patterns. Dynamic markings include *pp* (pianissimo) and *p* (piano). The piece ends with a double bar line and a fermata. The number "54-55" is written at the bottom right of the sixth staff.

5 "La Font del Tero" Baix

Handwritten musical score for a piece titled "La Font del Tero" for Bass (Baix). The score is written on a single staff with a key signature of one flat (B-flat) and a 2/4 time signature. The notation includes various musical symbols such as notes, rests, and dynamic markings. The piece begins with a forte (f) dynamic and a pinched (pin) articulation. It features several measures of sixteenth-note runs and rests. Dynamic markings include f, m-f, p, and f. Articulations include pin, arc, and a final f. Fingerings are indicated by numbers 1, 2, 4, 6, 1, 2, 4, 6, 8. The score concludes with a double bar line and a final f dynamic.