

*L'Anna i en Ramon de Santa Pau**M. Teresa Monclús i Marqués*

1

Musical score for the Sarda *L'Anna i en Ramon de Santa Pau* by M. Teresa Monclús i Marqués. The score is written for a full band and includes the following parts:

- FLABIOL
- TIBLE 1
- TIBLE 2
- TENORA 1
- TENORA 2
- TROMPETA 1
- TROMPETA 2
- TROMBÓ
- FISCORN 1
- FISCORN 2
- CONTRABAIX

The score is in 2/4 time and features a key signature of one sharp (F#). The music is marked with a forte (*f*) dynamic. The Contrabaix part includes a section marked *ARC* (Arco) and a section marked *PZZ.* (Pizzicato). The score is written on a system of staves, with the instruments listed vertically on the left. The music is written in a single system, with the instruments listed vertically on the left. The score is written on a system of staves, with the instruments listed vertically on the left. The music is written in a single system, with the instruments listed vertically on the left.

10

FLABIOI

Musical staff for Flabiol, featuring a treble clef and a key signature of one sharp (F#). The staff contains a melodic line starting with a quarter note, followed by a half note, and then a series of eighth notes.

TIBLE 1

Musical staff for Tible 1, featuring a treble clef and a key signature of one sharp (F#). The staff contains a melodic line starting with a quarter note, followed by a half note, and then a series of eighth notes.

TIBLE 2

Musical staff for Tible 2, featuring a treble clef and a key signature of one sharp (F#). The staff contains a melodic line starting with a quarter note, followed by a half note, and then a series of eighth notes.

TENORA 1

Musical staff for Tenora 1, featuring a treble clef and a key signature of one sharp (F#). The staff contains a melodic line starting with a quarter note, followed by a half note, and then a series of eighth notes.

TENORA 2

Musical staff for Tenora 2, featuring a treble clef and a key signature of one sharp (F#). The staff contains a melodic line starting with a quarter note, followed by a half note, and then a series of eighth notes.

TROMPETA 1

Musical staff for Trompeta 1, featuring a treble clef and a key signature of one sharp (F#). The staff contains a melodic line starting with a quarter note, followed by a half note, and then a series of eighth notes.

TROMPETA 2

Musical staff for Trompeta 2, featuring a treble clef and a key signature of one sharp (F#). The staff contains a melodic line starting with a quarter note, followed by a half note, and then a series of eighth notes.

TROMBÓ

Musical staff for Trombó, featuring a bass clef and a key signature of one sharp (F#). The staff contains a melodic line starting with a quarter note, followed by a half note, and then a series of eighth notes.

FISCORN 1

Musical staff for Fiscorn 1, featuring a bass clef and a key signature of one sharp (F#). The staff contains a melodic line starting with a quarter note, followed by a half note, and then a series of eighth notes.

FISCORN 2

Musical staff for Fiscorn 2, featuring a bass clef and a key signature of one sharp (F#). The staff contains a melodic line starting with a quarter note, followed by a half note, and then a series of eighth notes.

CONTRABAIX

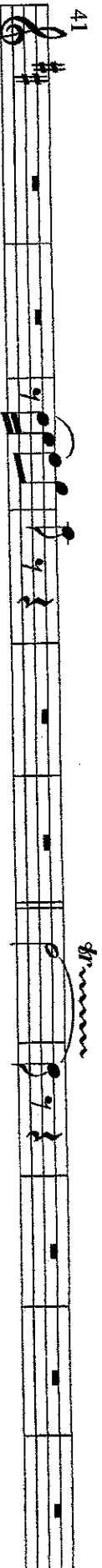
Musical staff for Contrabaix, featuring a bass clef and a key signature of one sharp (F#). The staff contains a melodic line starting with a quarter note, followed by a half note, and then a series of eighth notes.

[illegible]

[illegible]

41

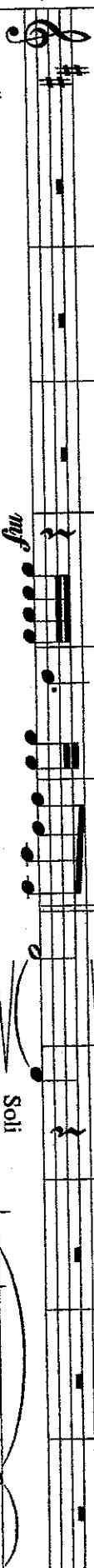
FLABIOI



TIBLE 1



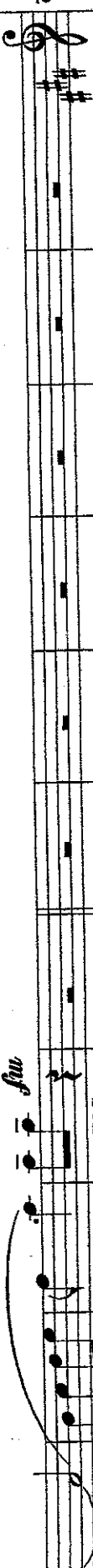
TIBLE 2



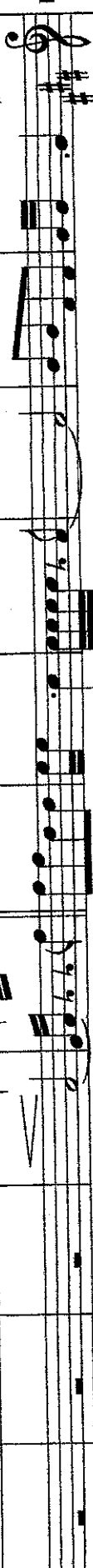
TENORA 1



TENORA 2



TROMPETA 1



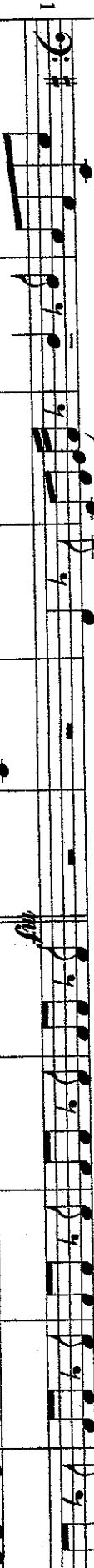
TROMPETA 2



TROMBO



FISCORN 1



FISCORN 2



CONTRABAIX



52

FLABIOI

TIBILE 1

TIBILE 2

TENORA 1

TENORA 2

TROMPETA 1

TROMPETA 2

TROMBÓ

FISCORN 1

FISCORN 2

CONTRABAIX

mf

tr

mf

f

mf

63

FLABIOI

TIBL I

TIBL 2

TENORA 1

TENORA 2

TROMPETA 1

TROMPETA 2

TROMBÓ

FISCORN 1

FISCORN 2

CONTRABAIX

Soli

mf

mf

mf

PZZ.

74

Musical score for a symphonic band, measures 74-77. The score includes parts for Flabiol, Tible 1, Tible 2, Tenora 1, Tenora 2, Trompeta 1, Trompeta 2, Trombo, Fiscorn 1, Fiscorn 2, and Contrabaix.

Flabiol: Measures 74-77. Dynamics: *ff* (measures 74-75), *sf* (measure 76), *ff* (measure 77). Articulation: *sf* (measures 74-75), *sf* (measure 76), *sf* (measure 77).

Tible 1: Measures 74-77. Dynamics: *mp* (measures 74-75), *mp* (measure 76), *mp* (measure 77). Articulation: *mp* (measures 74-75), *mp* (measure 76), *mp* (measure 77).

Tible 2: Measures 74-77. Dynamics: *mp* (measures 74-75), *mp* (measure 76), *mp* (measure 77). Articulation: *mp* (measures 74-75), *mp* (measure 76), *mp* (measure 77).

Tenora 1: Measures 74-77. Dynamics: *mp* (measures 74-75), *mp* (measure 76), *mp* (measure 77). Articulation: *mp* (measures 74-75), *mp* (measure 76), *mp* (measure 77).

Tenora 2: Measures 74-77. Dynamics: *mp* (measures 74-75), *mp* (measure 76), *mp* (measure 77). Articulation: *mp* (measures 74-75), *mp* (measure 76), *mp* (measure 77).

Trompeta 1: Measures 74-77. Dynamics: *mp* (measures 74-75), *mp* (measure 76), *mp* (measure 77). Articulation: *mp* (measures 74-75), *mp* (measure 76), *mp* (measure 77).

Trompeta 2: Measures 74-77. Dynamics: *mp* (measures 74-75), *mp* (measure 76), *mp* (measure 77). Articulation: *mp* (measures 74-75), *mp* (measure 76), *mp* (measure 77).

Trombo: Measures 74-77. Dynamics: *mp* (measures 74-75), *mp* (measure 76), *mp* (measure 77). Articulation: *mp* (measures 74-75), *mp* (measure 76), *mp* (measure 77).

Fiscorn 1: Measures 74-77. Dynamics: *mp* (measures 74-75), *mp* (measure 76), *mp* (measure 77). Articulation: *mp* (measures 74-75), *mp* (measure 76), *mp* (measure 77).

Fiscorn 2: Measures 74-77. Dynamics: *mp* (measures 74-75), *mp* (measure 76), *mp* (measure 77). Articulation: *mp* (measures 74-75), *mp* (measure 76), *mp* (measure 77).

Contrabaix: Measures 74-77. Dynamics: *mp* (measures 74-75), *mp* (measure 76), *mp* (measure 77). Articulation: *mp* (measures 74-75), *mp* (measure 76), *mp* (measure 77).

[illegible]

96

Musical score for a large ensemble, measures 96 to 100. The score is written for the following instruments:

- FLAUTOL
- TIBLE 1
- TIBLE 2
- TENORA 1
- TENORA 2
- TROMPETA 1
- TROMPETA 2
- TROMBÓ
- FISCORN 1
- FISCORN 2
- CONTRABAIX

The score is in 2/4 time and features complex rhythmic patterns, including sixteenth and thirty-second notes, and rests. The key signature is one sharp (F#). The music is characterized by dense, overlapping textures and frequent use of ties and slurs.

FLABIOIOL

TIBLE 1

TIBLE 2

TENORA 1

TENORA 2

TROMPETA 1

TROMPETA 2

TROMBÓ

FISCORN 1

FISCORN 2

CONTRABAIX

11

IL ARGS

CURTS

FI

29x83

Estiu 2022

