

SARDANA

Ntra. Sra. de

MONTALBA

Preixana 28-7-91

VERGE DE MONTALBÀ

JARFANA

Flübiol

Handwritten musical score for 'VERGE DE MONTALBÀ' by Jean Louvezie. The score is written on ten staves in G major (one sharp) and 2/4 time. It features various musical notations including eighth and sixteenth notes, rests, and dynamic markings like 'mf' and 'f'. Measure numbers 8, 16, and 24 are indicated at the start of their respective staves. The piece concludes with a double bar line and repeat dots.

VERGE DE MONTAIBA JARDIN TIBLE 2°

Handwritten musical score for a piece titled "VERGE DE MONTAIBA JARDIN TIBLE 2°". The score is written on ten staves, with the first six staves containing musical notation and the last four staves being empty. The notation includes various musical symbols such as clefs, key signatures, time signatures, and notes. The first staff begins with a treble clef and a key signature of one sharp (F#). The second staff has a time signature of 3/4. The third staff has a time signature of 4/4. The fourth staff has a time signature of 4/4. The fifth staff has a time signature of 4/4. The sixth staff has a time signature of 4/4. The seventh staff has a time signature of 4/4. The eighth staff has a time signature of 4/4. The ninth staff has a time signature of 4/4. The tenth staff has a time signature of 4/4. The score is written in a cursive, handwritten style.

VERGE DE MONTALBÀ CARBANA TIBLE 1^a



VERGE DE MONTALBÀ

JACQUES

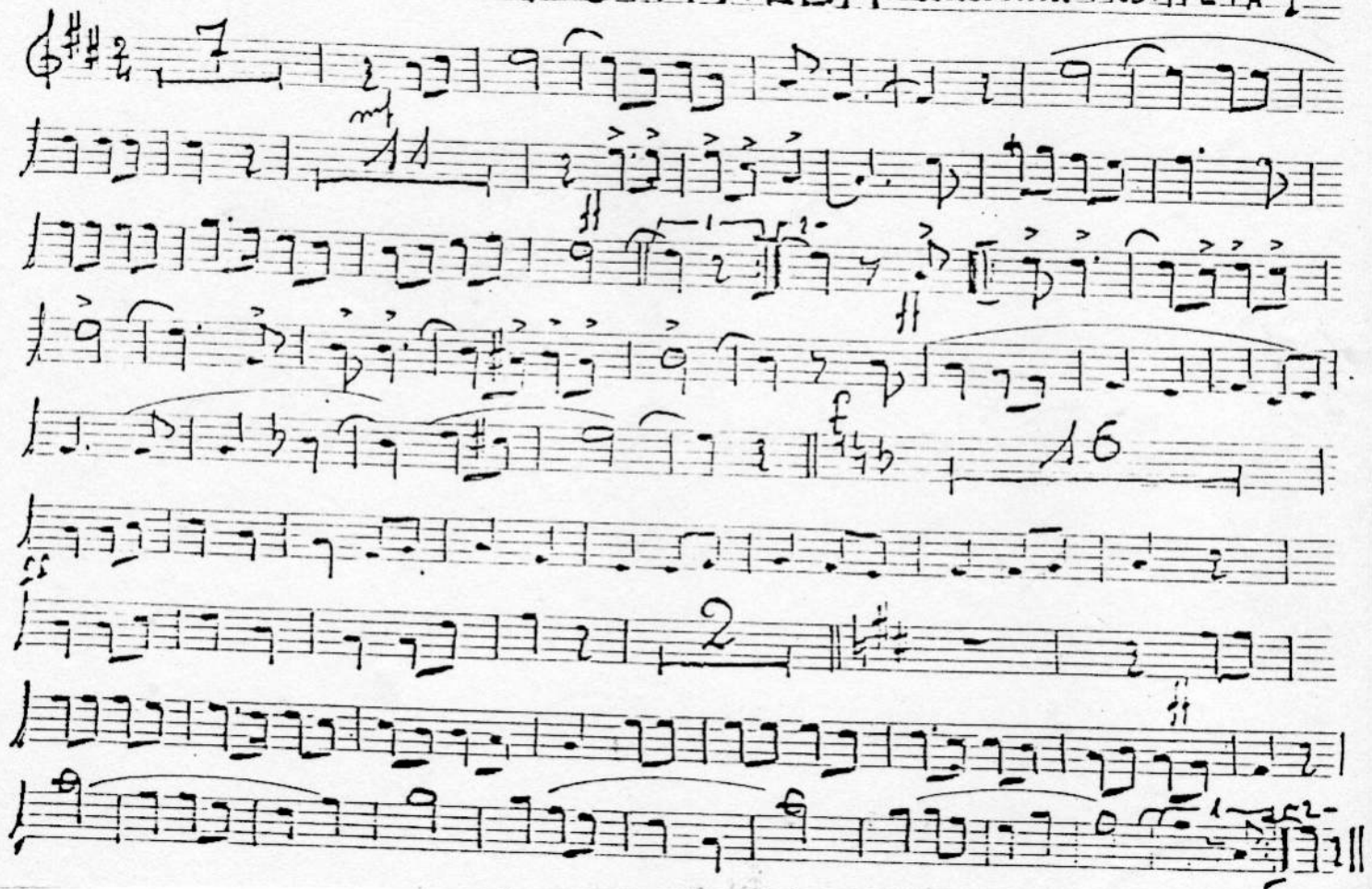
TENORA

Handwritten musical score for "VERGE DE MONTALBÀ" by Jacques Tenora. The score is written on ten staves. The first staff begins with a treble clef, a key signature of one sharp (F#), and a 2/4 time signature. The music is written in a single melodic line. There are several measures with fingerings (15, 37, 14) and dynamic markings (f, f/ab). The score ends with a double bar line and a repeat sign.

VERGE DE MONTALBÀ JARDANA TENORA 2ª

Handwritten musical score for 'VERGE DE MONTALBÀ' by Joan Roura i Jane. The score is written on ten staves in treble clef with a key signature of two sharps (F# and C#). It includes various musical notations such as notes, rests, and dynamic markings like 'pp' and 'f'. Measure numbers 1, 3, 5, 7, 8, and 9 are indicated above the staves. The piece concludes with a double bar line and the initials 'D.C.'.

VERGE DE MONTALBÀ SARDANA TROMPETA 1^a



VERGE DE MONTALBÀ JARDANA TROMPETA II^a

Handwritten musical score for Trompete II, titled "VERGE DE MONTALBÀ JARDANA TROMPETA II^a". The score is written on ten staves. The first staff begins with a treble clef, a key signature of two sharps (F# and C#), and a 2/4 time signature. The music features various note values, rests, and dynamic markings such as *mf*, *ff*, and *ff*. The score includes several measures with rests, some marked with "7", "5", "16", and "2". The piece concludes with a double bar line and a final note. The notation is handwritten and appears to be a personal or working manuscript.

VERGE DE MONTALBÀ JARDANA TROMBÓ



VERGE DE MORTALBA

J. R. DANIEL

FISCORN 1^{er}

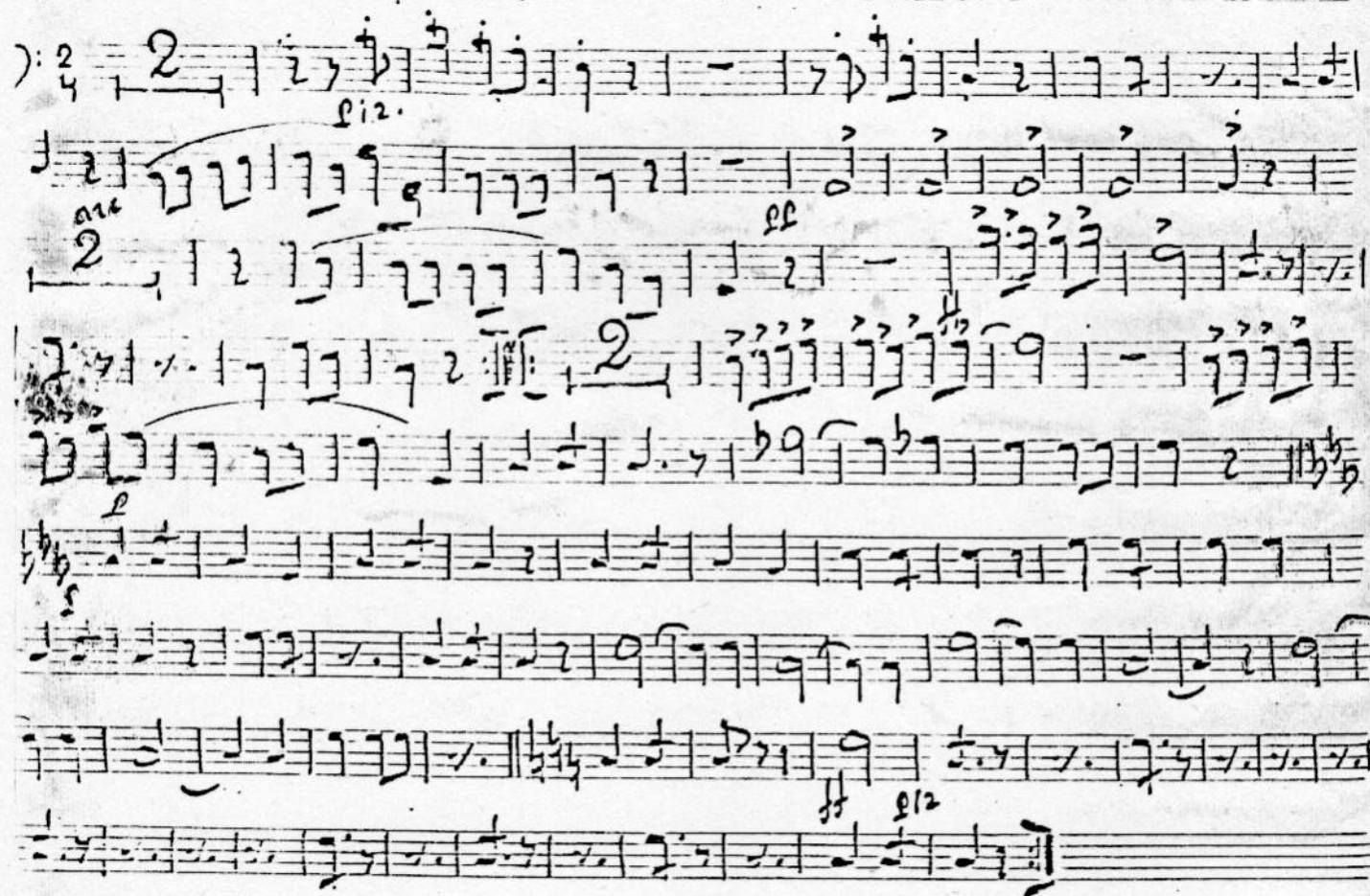
Handwritten musical score for the piece "VERGE DE MORTALBA" by J. R. DANIEL, specifically for the first Fisicorno (Fiscorn 1^{er}). The score is written on ten staves. The first staff begins with a treble clef and a key signature of one flat (B-flat). The music is characterized by frequent beamed sixteenth and thirty-second notes, suggesting a fast tempo. Various dynamic markings are present throughout the score, including *p* (piano), *mf* (mezzo-forte), *f* (forte), *pp* (pianissimo), and *sf* (sforzando). Performance instructions such as *obblig.* (obligato) and *mf del trombo* (mezzo-forte of the trombone) are also included. The score concludes with a double bar line and a final key signature change to two flats (B-flat and E-flat).

22

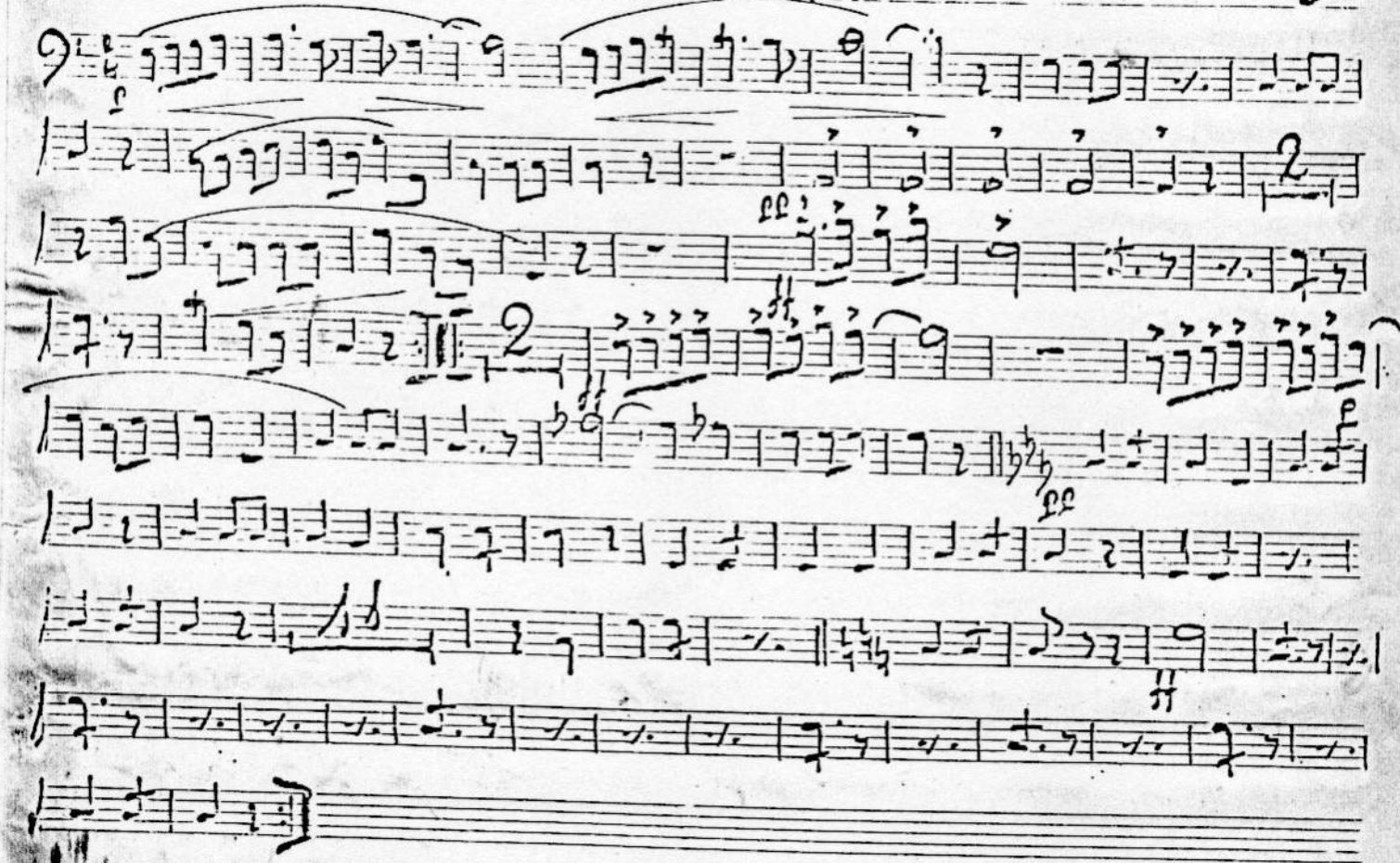
VERGE DE MONTALEA - SARDANA - FISCORN 2^a

A handwritten musical score for a FISCORN 2^a part. The score is written on ten staves. The first staff begins with a treble clef and a key signature of one sharp (F#). The music is written in a style characteristic of traditional Sardinian folk music, featuring a mix of eighth and sixteenth notes, often beamed together in groups. There are several measures with rests, and some measures contain dynamic markings such as 'ff' (fortissimo) and 'f' (forte). The notation includes various accidentals (sharps, flats, naturals) and phrasing slurs. The final staff of the score ends with a double bar line and a repeat sign.

VERGE DE MONTILBA JORDANA C. BAIX



VERGE DE MONTALBÀ - JARDANA FISCORN 2^a



VERGE DE MONTALBA JARDANA TROMPETA II

Handwritten musical score for 'VERGE DE MONTALBA' for JARDANA TROMPETA II. The score is written on ten staves, organized into two systems of five staves each. The first system begins with a treble clef, a key signature of two sharps (F# and C#), and a 2/4 time signature. The music features a variety of note values, including eighth and sixteenth notes, and rests. Dynamic markings such as 'mf' (mezzo-forte) and 'ff' (fortissimo) are present. The second system starts with a new key signature of one sharp (F#) and a 2/4 time signature. It includes a measure rest for 16 measures, followed by a repeat sign and a measure rest for 2 measures. The score concludes with a double bar line and a 'D.C.' (Da Capo) instruction. The handwriting is in black ink on aged paper.