

= TOT BALLANT M'HE ENAMORAT DE TU =

= TOT BALLANT M'HE ENAMORAT DE TU =

Handwritten musical score for "The Rose Tree" in G major. The score is written on ten staves, with the first two staves in treble clef and the remaining eight in bass clef. The key signature is one sharp (F#), and the time signature is 2/4. The music includes various notations such as notes, rests, and fingerings. The first staff begins with a treble clef, a key signature of one sharp, and a time signature of 2/4. The melody is written in the treble clef, and the bass line is written in the bass clef. The score includes various musical notations such as notes, rests, and fingerings. The first staff begins with a treble clef, a key signature of one sharp, and a time signature of 2/4. The melody is written in the treble clef, and the bass line is written in the bass clef. The score includes various musical notations such as notes, rests, and fingerings. The first staff begins with a treble clef, a key signature of one sharp, and a time signature of 2/4. The melody is written in the treble clef, and the bass line is written in the bass clef. The score includes various musical notations such as notes, rests, and fingerings.

[TIPLE]

= TOT BALLANT M'HE ENAMORAT DE TU =

Handwritten musical score for Tiple. The score is written on six staves. The first staff begins with a treble clef, a key signature of two sharps (F# and C#), and a 2/4 time signature. The music is written in a single melodic line. The second staff contains a measure with a '38' written above it, followed by a double bar line. The third staff has a '3' written above a triplet. The fourth staff has a '9' written above a measure, followed by a 'sol!' annotation. The fifth staff has a '2' written above a measure, followed by a 'Picat' annotation. The sixth staff has a '3' written above a triplet, followed by a double bar line and a key signature change to one sharp (F#). The score ends with a double bar line and a key signature change to one sharp (F#).



II TIPLE

= TOT BALLANT M'HE ENAMORAT DE TU =

Handwritten musical score for a piece titled "II TIPLE" with the subtitle "= TOT BALLANT M'HE ENAMORAT DE TU =". The score is written on five staves. The first staff begins with a treble clef, a key signature of two sharps (F# and C#), and a 2/4 time signature. The music is written in a single melodic line with various note values, rests, and dynamic markings. The second staff continues the melody. The third staff has a "45" marking above the first measure and a "soli" marking above a later measure. The fourth staff has a "soli" marking above a measure and a "Picat" marking below a measure. The fifth staff ends with a double bar line and a key signature change to two sharps (F# and C#). There are several circled notes and markings throughout the score, including a circled "f" and a circled "f2". The score is followed by three empty staves.



I TENOR

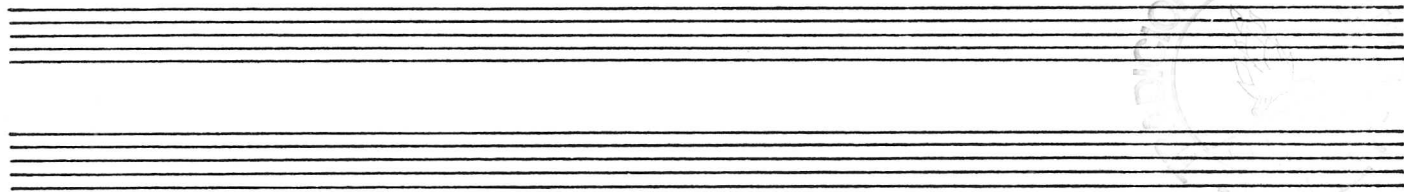
=TOT BALLANT M'HE ENAMORAT DE TU=

Handwritten musical score for Tenor voice, titled "I TENOR" and "TOT BALLANT M'HE ENAMORAT DE TU". The score is written on eight staves. The key signature is three sharps (F#, C#, G#) and the time signature is 2/4. The music features various rhythmic patterns, including eighth and sixteenth notes, and rests. There are several annotations: "solo" written above the staff in the second measure of the second staff, and "3" written above the staff in the third measure of the fourth staff. There are also circled numbers 5 and 3 in the sixth and seventh staves respectively. The score ends with a double bar line and a key signature change to two sharps (F#, C#).

II TENDR

=TOT BALLANT M'HE ENAMORAT DE TU=

Handwritten musical score for II TENDR. The score is written on six staves. The first staff begins with a treble clef, a key signature of two sharps (F# and C#), and a 2/4 time signature. The music consists of eighth and sixteenth notes, with some measures containing rests. The second staff continues the melody, featuring a key signature change to one sharp (F#) and a 6/8 time signature. The third staff shows a key signature change to one flat (Bb) and a 2/4 time signature. The fourth staff continues the melody, with a key signature change to two flats (Bb and Eb) and a 2/4 time signature. The fifth staff shows a key signature change to one flat (Bb) and a 2/4 time signature. The sixth staff continues the melody, with a key signature change to one sharp (F#) and a 2/4 time signature. The score includes various musical notations such as clefs, key signatures, time signatures, notes, rests, and dynamic markings like 'ff' and 'fz'.



TROMPETA

=TOT BALLANT M'HE ENAMORAT DE TU=

Handwritten musical score for Trompete (Trumpet) titled "=TOT BALLANT M'HE ENAMORAT DE TU=".

The score is written on eight staves, featuring various musical notations including notes, rests, and dynamic markings.

Key markings and annotations include:

- mf** (mezzo-forte) marking at the start of the fourth staff.
- SORDINA** (mute) marking above the fifth staff.
- OPEN** marking above the sixth staff.
- Rehearsal marks (circled numbers 1 through 5) indicating specific sections of the music.
- Tempo and meter changes, including 2/4, 3/4, and 6/8.
- Articulation marks such as accents and slurs.
- A final key signature change to D major (two sharps) at the end of the eighth staff.



II TROMPETA

=TOT BALLANT M'HE ENAMORAT DE TU=

Handwritten musical score for II TROMPETA, titled "=TOT BALLANT M'HE ENAMORAT DE TU=".

The score is written on eight staves. The key signature is D major (two sharps: F# and C#). The time signature is 2/4.

Key markings and annotations include:

- mf** (mezzo-forte) marking on the fourth staff.
- SORDINA** (mute) marking on the fifth staff.
- OPEN** marking on the sixth staff.
- fz** (forzando) marking on the eighth staff.
- Dynamic markings **f** (forte) and **sf** (sforzando) are circled on various staves.
- Rehearsal marks (double bar lines with dots) are present at the beginning of the first staff, after the third staff, and at the end of the eighth staff.
- Tempo markings **2/4** and **3/4** are present on the first and sixth staves respectively.
- A circled **h h** marking is present on the sixth staff.
- A circled **fz** marking is present on the eighth staff.

A faint circular stamp is visible at the bottom center of the page, containing the text "STUMPS" and "TRAD".

ROMBO

=TOT BALLANT M'HE ENAMORAT DE TU=

Handwritten musical score for a piece titled "ROMBO". The score is written on seven staves. The first staff begins with a treble clef, a key signature of one sharp (F#), and a 2/4 time signature. The first measure is marked with a circled "2" and a dynamic marking of *mf*. The score includes various musical notations such as notes, rests, slurs, and dynamic markings like *mf*, *mp*, and *f*. There are also handwritten numbers above some measures, possibly indicating fingerings or measures. The score concludes with a double bar line and a sharp sign (#) on the seventh staff. A faint watermark is visible in the background.

I FISCORN

= TOT BALLANT M'HE ENAMORAT DE TU =

Handwritten musical score for I FISCORN. The score is written on eight staves. The key signature is one sharp (F#) and the time signature is 2/4. The music features various rhythmic patterns, including eighth and sixteenth notes, and rests. There are several dynamic markings: *mf* (mezzo-forte) and *fz* (forzando). The score includes a repeat sign with first and second endings. There are also some circled notes and a circled 'fz' marking. The notation is in a cursive, handwritten style.

I FISCORN

= TOT BALLANT M'HE ENAMORAT DE TU =

Handwritten musical score for FISCORN, titled "TOT BALLANT M'HE ENAMORAT DE TU". The score is written on eight staves, featuring various musical notations including notes, rests, and dynamic markings.

The score begins with a treble clef and a key signature of one sharp (F#). The first staff includes a dynamic marking of *mf* and a measure with a circled '2'. The second staff contains a measure with a circled '4'. The third staff features a measure with a circled '6' and a dynamic marking of *mf*. The fourth staff includes a measure with a circled 'P' and a measure with a circled '3'. The fifth staff contains a measure with a circled '3'. The sixth staff includes a measure with a circled 'F' and a measure with a circled 'F#'. The seventh staff contains a measure with a circled '2' and a measure with a circled '3'. The eighth staff includes a measure with a circled '3' and a measure with a circled 'F#'. The score concludes with a double bar line and a key signature change to one sharp (F#).

BAIX

=TOT BALLANT M'HE ENAMORAT DE TU=

Handwritten musical score for a piece titled "TOT BALLANT M'HE ENAMORAT DE TU". The score is written on ten staves. The first staff is in treble clef with a key signature of one sharp (F#) and a 2/4 time signature. It begins with a circled "2" and an "arc" marking. The first eight measures are marked with fingerings 2, 3, 4, 5, 6, 7, and 8. The next six measures are marked with fingerings 2, 3, 4, 5, and 6. The second staff continues the melody, featuring a "Pizz." marking. The third staff is in bass clef with a key signature of one flat (Bb) and a 2/4 time signature. It begins with a circled "1" and an "arc" marking. The first eight measures are marked with fingerings 2, 3, 4, 5, 6, 7, and 8. The next six measures are marked with fingerings 2, 3, 4, 5, and 6. The fourth staff continues the melody, featuring a "Pizz." marking. The fifth staff continues the melody. The sixth staff continues the melody. The seventh staff continues the melody. The eighth staff continues the melody. The ninth staff continues the melody. The tenth staff continues the melody, ending with a double bar line and a circled "F#". The score includes various musical notations such as notes, rests, and dynamic markings like "arc" and "Pizz.".

