

Donna sort

Flaviol

Handwritten musical score for Flaviol, titled "Donna sort". The score consists of nine staves of music. The first staff begins with a treble clef and a 6/8 time signature. The music is written in a single melodic line. There are various musical notations including eighth notes, sixteenth notes, and rests. Some staves have a "2" written below them, possibly indicating a second ending or a measure count. The notation is in a historical style, with some ligatures and a mix of clefs. The score ends with a double bar line and a repeat sign.

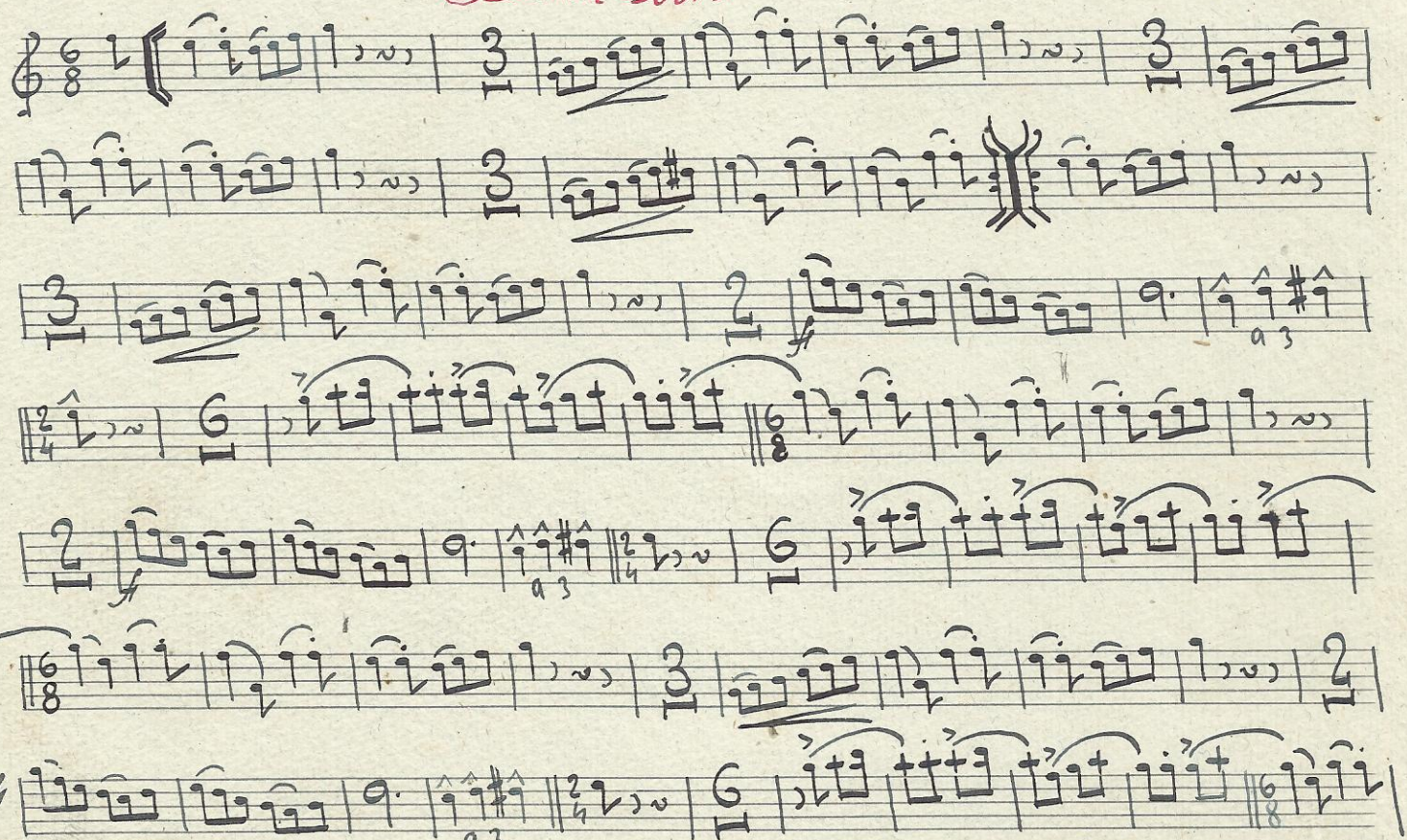
*a cura di
allanus*

Per arabar

contrapunt amb
Fa M.

Donna sort

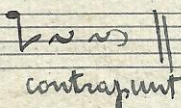
Tiple 1^{or}



acutis illores

~~musica~~

Peracabar



contrapunt

contrapunt

Dona sort

Tiple 2^m

Handwritten musical score for Tiple 2^m. The score consists of seven staves of music. The first staff begins with a treble clef and a 6/8 time signature. The music is written in a style characteristic of 18th-century manuscript notation, featuring various time signatures (3/8, 2/4, 3/4, 6/8) and accidentals (sharps, flats, naturals). The notation includes many beamed sixteenth and thirty-second notes, suggesting a fast tempo. The key signature is mostly natural, with some sharps appearing in later staves. The score ends with a double bar line on the seventh staff.

acutis illarus

Per acabar

contrapunt

Bona Sort.

Genor 1^{er}

Handwritten musical score for "Bona Sort." by Genor 1^{er}. The score is written on eight staves. It begins with a treble clef, a key signature of one sharp (F#), and a time signature of 6/8. The music consists of eighth and sixteenth notes, often beamed together in groups. There are several triplets indicated by a "3" over the notes. The score includes repeat signs and a double bar line with a "5" indicating a measure rest. The final section is marked "Final" and ends with a double bar line.

< Dona sort >

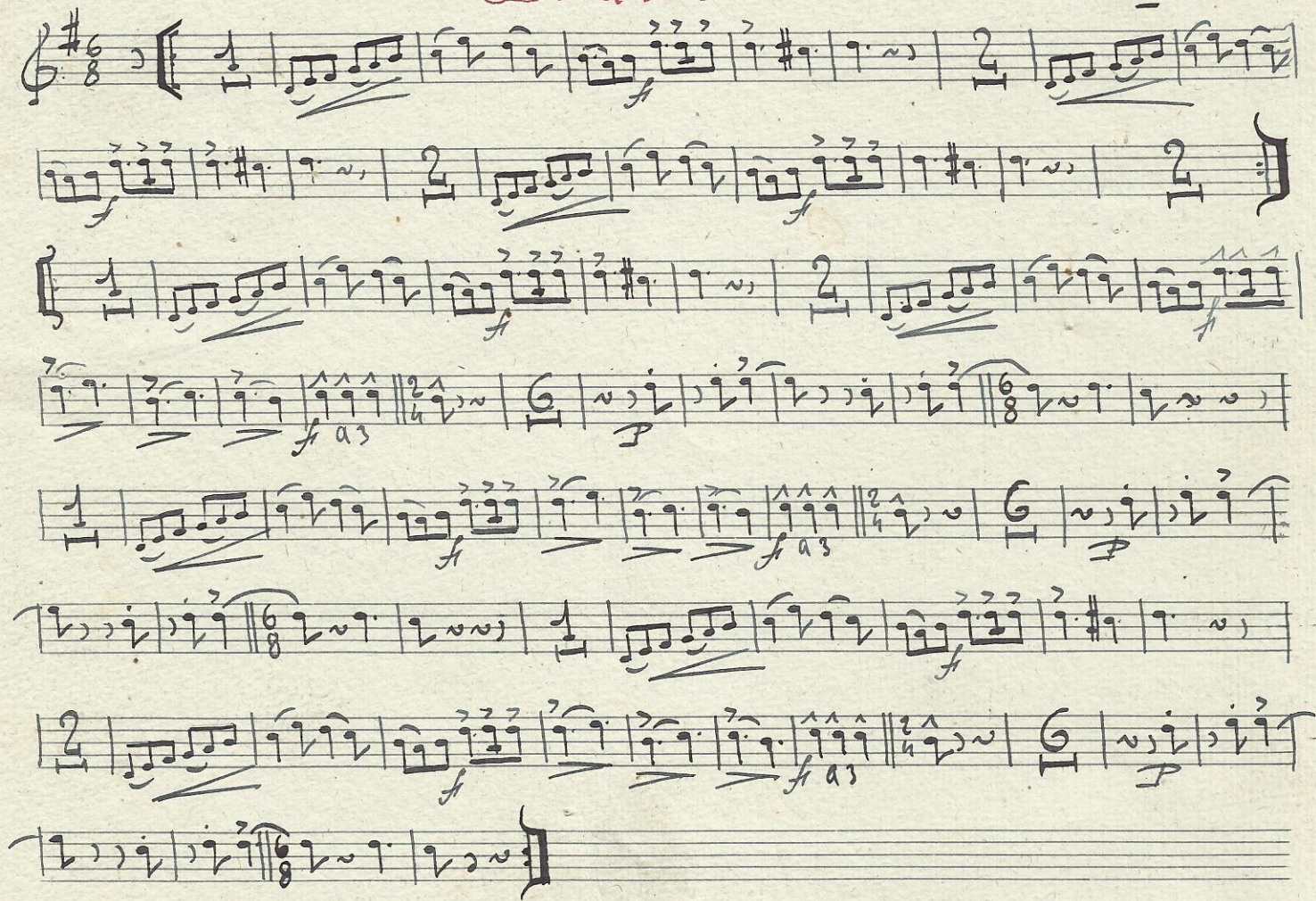
Tenor 2^{on}

Handwritten musical score for Tenor 2^{on}. The score is written on six staves. The first staff begins with a treble clef, a key signature of one sharp (F#), and a time signature of 6/8. The music consists of eighth and sixteenth notes, with some triplets indicated by a '3' over the notes. The second staff continues the melody. The third staff also continues the melody. The fourth staff features a double bar line with a repeat sign, followed by a change in time signature to 6/8. The fifth staff continues the melody. The sixth staff ends with a double bar line and a repeat sign. The notation includes various musical symbols such as clefs, key signatures, time signatures, and note values.

~~Per acabar~~
~~contrapunt~~
2 //

Bona sort

Trompeta 1^a



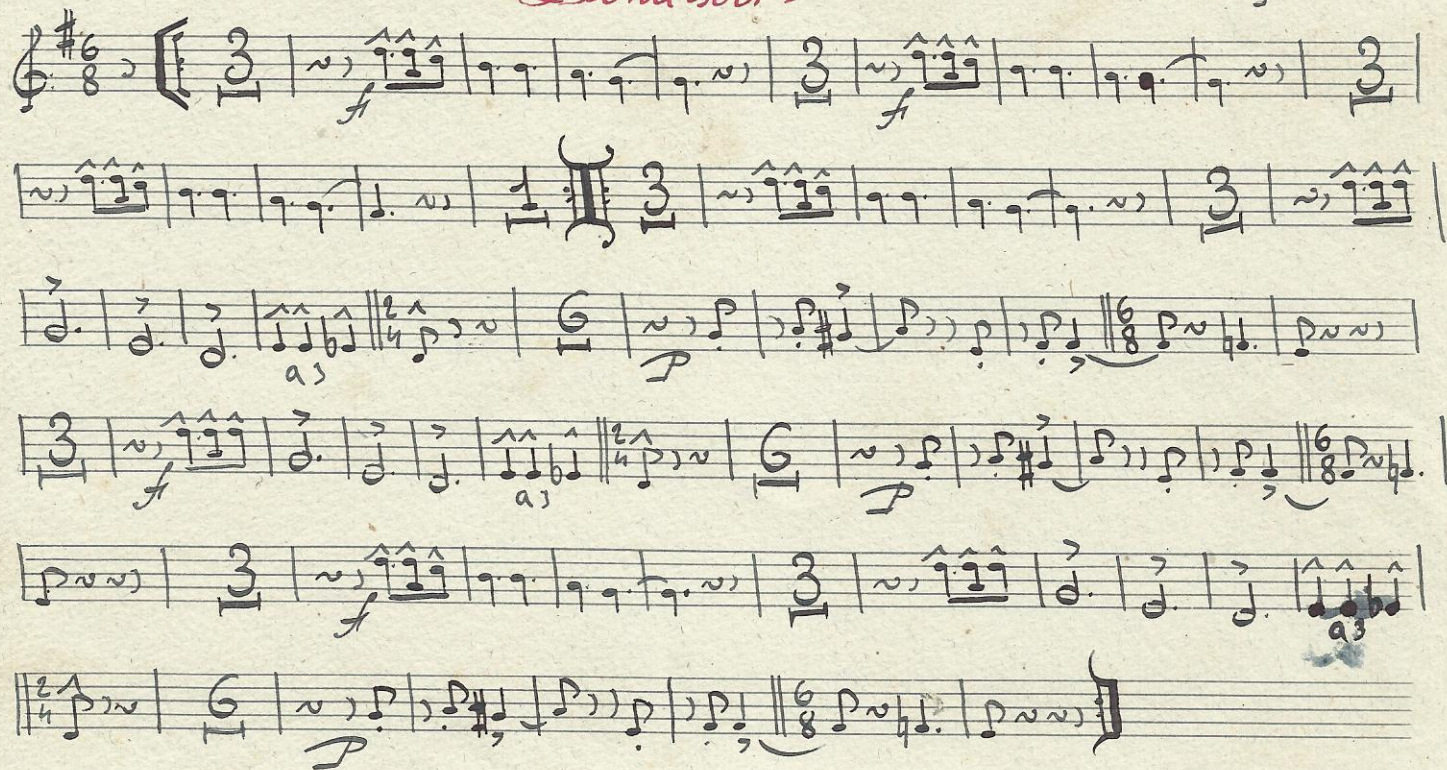
(Bona sort)

Trompeta 2^a

Handwritten musical score for Trompeta 2^a, titled "(Bona sort)". The score is written on seven staves. The first staff begins with a treble clef, a key signature of one sharp (F#), and a 6/8 time signature. The music is written in a single system. The notation includes various note values, rests, and dynamic markings such as "P" (piano) and "f" (forte). There are also some handwritten annotations like "a3" and "a3" near the bottom of the staves. The score ends with a double bar line and a repeat sign.

< Bona sort >

Trompeta 3ª



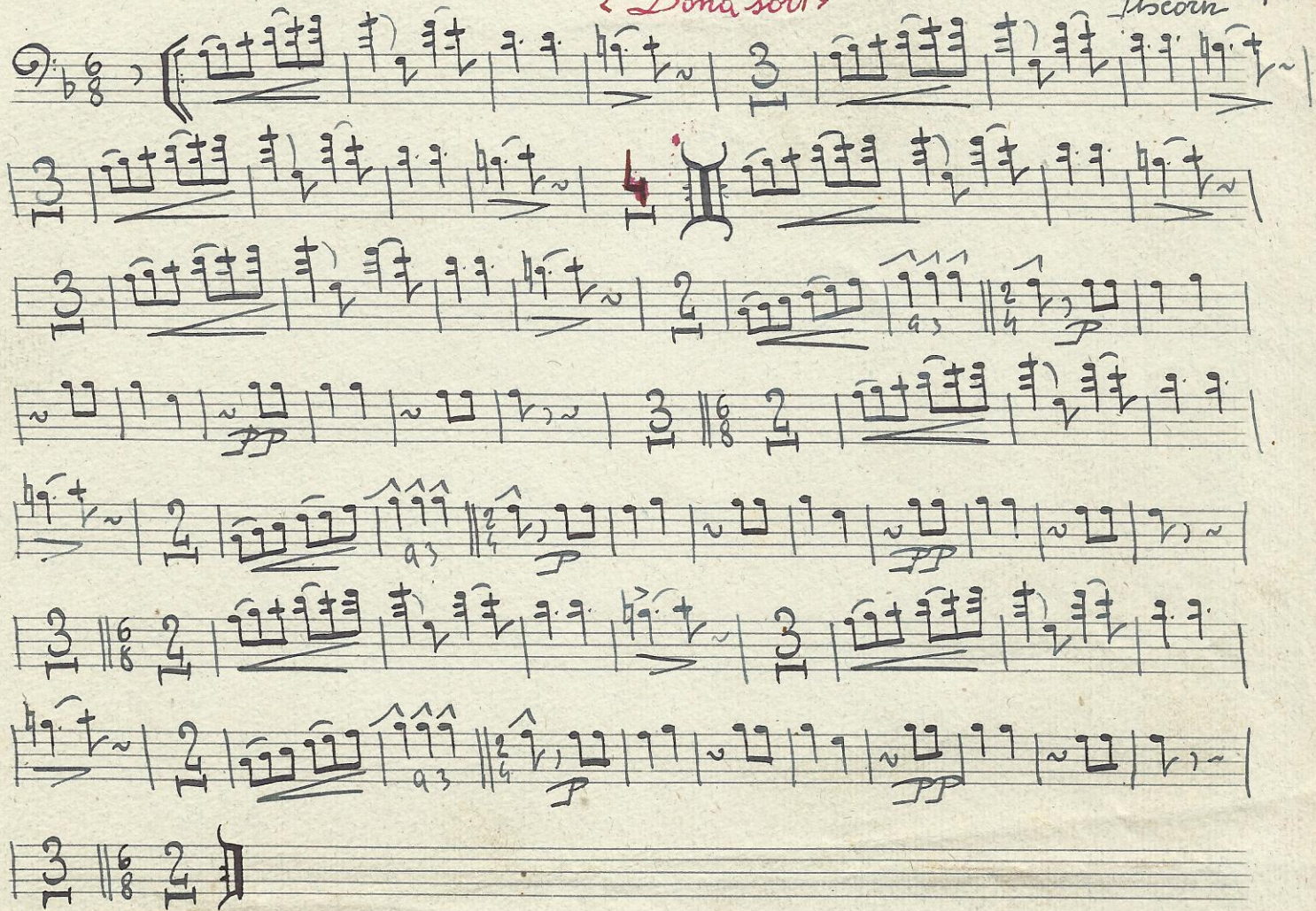
Dona sort

Trombo 2^{on}

Handwritten musical score for Trombo 2^{on}, featuring six staves of music. The notation includes various notes, rests, and dynamic markings. The first staff begins with a treble clef and a key signature of one flat (B-flat). The music is written in a style that suggests a 19th-century manuscript. The staves are numbered 1 through 6. The notation includes various notes, rests, and dynamic markings such as *pp* (pianissimo) and *ppp* (pianissimissimo). The score concludes with a double bar line and a final note on the sixth staff.

< Bona sort >

Fiscorn 1^{er}



"BONA SORT"

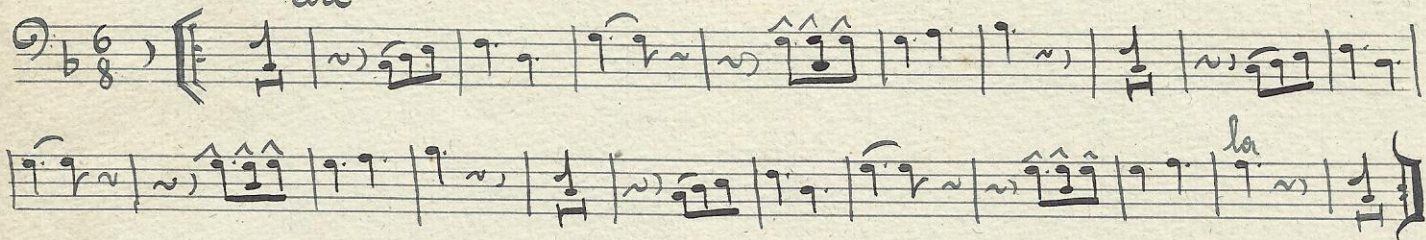
Fiscorn 2^{on}

Handwritten musical score for "BONA SORT" for Fiscorn 2^{on}. The score consists of eight staves of music. The first staff begins with a treble clef, a key signature of one flat (B-flat), and a common time signature (C). The music is written in a single melodic line. The notation includes various note values (quarter, eighth, and sixteenth notes), rests, and dynamic markings such as 'p' (piano) and 'f' (forte). There are also articulation marks like slurs and accents. The score includes several measures with triplets (indicated by a '3' over a group of notes) and some measures with a '2' over a group of notes, possibly indicating a second ending or a specific rhythmic pattern. The final staff ends with a double bar line and a repeat sign.

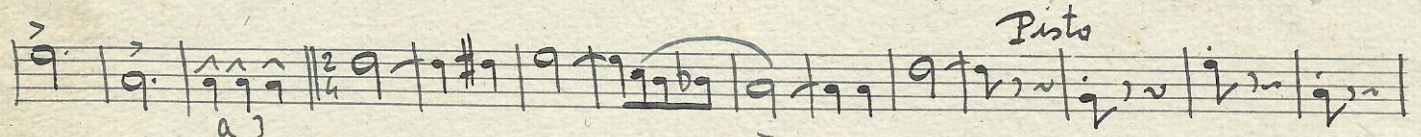
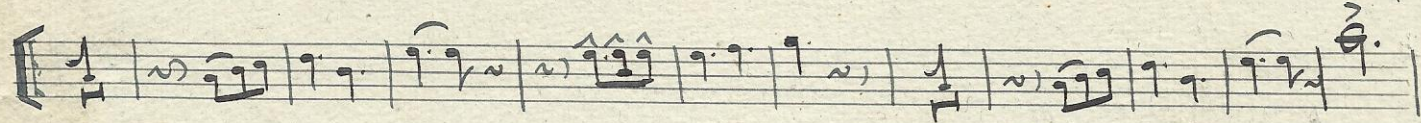
Donna sort

Baix

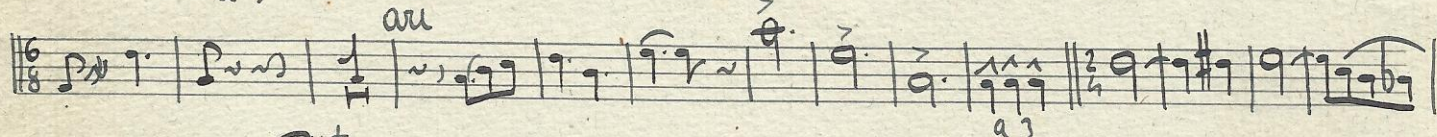
au



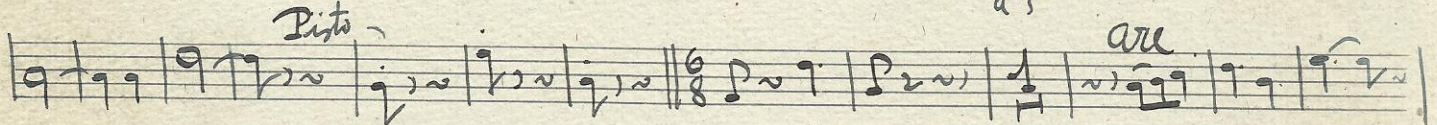
la



Pisto

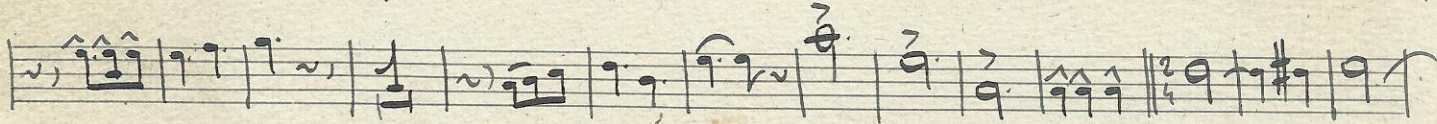


au

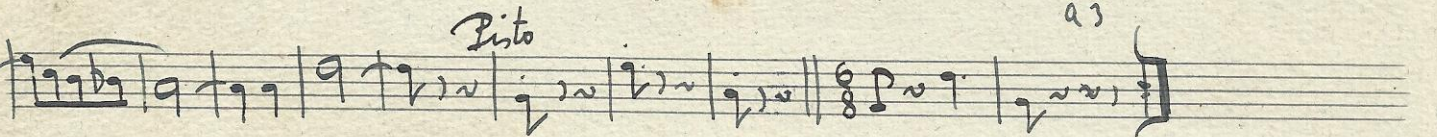


Pisto

au



Pisto



a3