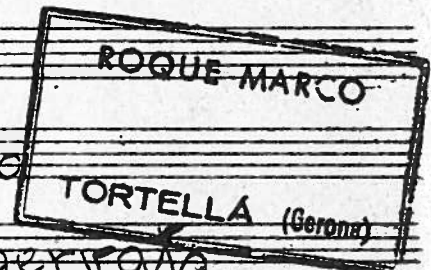


De l' Ansoria à l' Emurda
Sardana per cobla

per

Vicens Castellano

Registrada = Derets Reservats



Sardana

Conchita

[Signature]

Conchita

Flügel



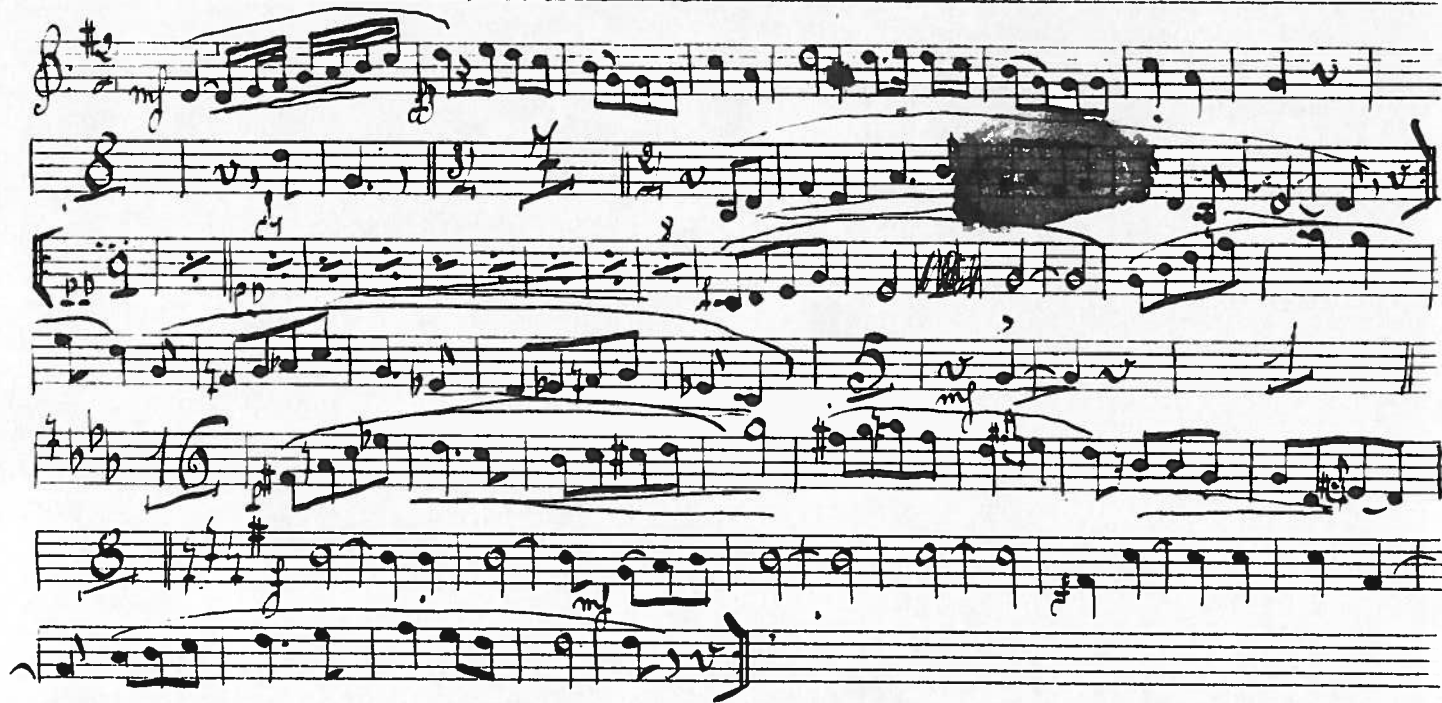
Conchita

Gipsy 1^o



Conchita

Gipsy 2^{da}



Conchita ~

Tenor / ^{er}/₁₁ 7



Conchita

Geno 2^a

Handwritten musical score for 'Conchita'. The score is written on seven staves. The first staff begins with a treble clef, a key signature of one sharp (F#), and a 2/4 time signature. The music is written in a fluid, handwritten style. The second staff has a 'tronde' marking above it. The third staff features a large '10' and a double bar line. The fourth staff has a '8' and a double bar line. The fifth staff has a 'mp' marking below it. The sixth staff has a 'mp' marking below it. The seventh staff has a 'mp' marking below it. The score concludes with a double bar line and a final note.

- Conchita -

- Corneti 1^{er} -



~ Conchita ~

Corneti 1 & 2



Conchita ~

• Trombo •



Conchita

• Tiscorn 1^{er} 7



Conchita

Fugorn 2^o



Conchita

. Baixe .

Handwritten musical score for 'Conchita'. The score is written on seven staves. The first staff begins with a treble clef, a key signature of one flat (B-flat), and a 2/4 time signature. The music is written in a cursive, handwritten style. The score includes various musical notations such as notes, rests, and bar lines. Dynamic markings are present throughout the piece, including 'p' (piano), 'mf' (mezzo-forte), 'f' (forte), 'pizz' (pizzicato), 'arco' (arco), and 'rit' (ritardando). The score concludes with a double bar line on the seventh staff.