

Flapril
gh Palau

81-2513

La font de l'arbre Mentider

Morata
Lardiana

Handwritten musical score for a piece titled "La font de l'arbre Mentider" by Morata Lardiana. The score is written on ten staves. The first staff begins with a treble clef, a key signature of one sharp (F#), and a 2/4 time signature. The music is written in a style characteristic of early 20th-century folk or regional music, featuring a mix of eighth and sixteenth notes, rests, and various accidentals. The notation includes many natural signs, sharp signs, and flat signs, often with a small 't' or 'h' above them. There are also some unusual symbols like 'Hm' and 'fm' in the first staff. The score is divided into measures by vertical bar lines, with some measures containing repeat signs. The overall style is that of a handwritten manuscript, possibly a composer's sketch or a working draft.

cillo Jh. Palau La font de l'arbre mentidet - ymorata zardana -

Handwritten musical score for a piece titled "La font de l'arbre mentidet - ymorata zardana" by Jh. Palau. The score is written on ten staves in a single system. It begins with a treble clef, a 2/4 time signature, and a key signature of one sharp (F#). The notation includes various note values (quarter, eighth, sixteenth notes), rests, and dynamic markings such as "mf" (mezzo-forte), "f" (forte), and "p" (piano). There are also articulation marks like "+" and "x". The piece concludes with a double bar line and a repeat sign. The page number "85" is written in the bottom left corner.

2^o tible

J. Palau

La font de l'arbre mentides

Imitata

Sardana



12th

Palma

La font de l'arbre Mentislet *monata sardana*



erist *Imortal* La font de l'arbre Mentider *Palau* Sardana.

Handwritten musical score for a Sardana titled "La font de l'arbre Mentider" by Palau. The score is written on ten staves, with a key signature of one sharp (F#) and a 2/4 time signature. The notation includes various musical symbols such as notes, rests, and dynamic markings like "mt", "p", and "f". There are also handwritten annotations like "Clergo" and "Palau". The score is written in a cursive, handwritten style.

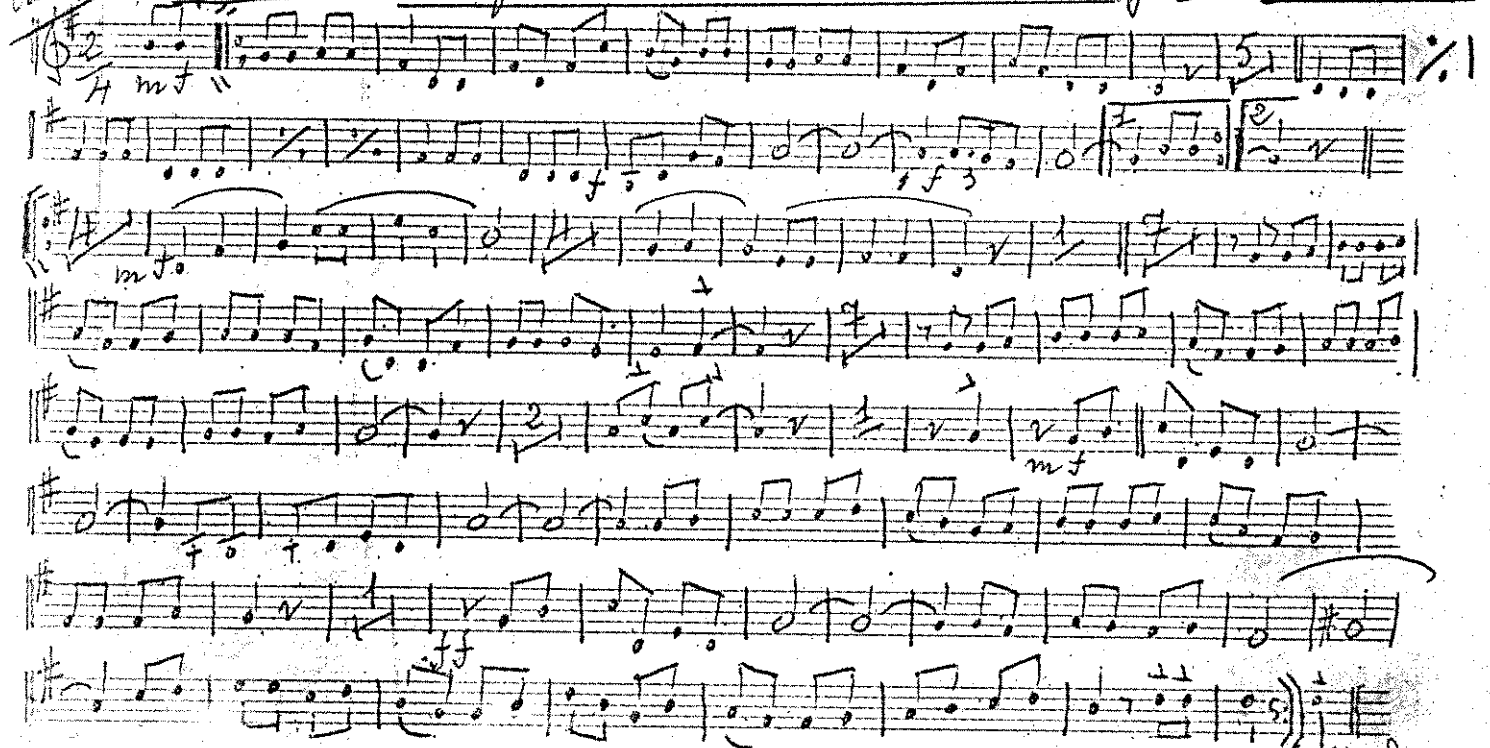
1^{re} trompeta *Palau* La font de l'arbre mentidet *Imorato* Sardane

Handwritten musical score for 1st trumpet, titled "Palau La font de l'arbre mentidet Imorato Sardane". The score is written on ten staves with a key signature of one sharp (F#) and a 2/4 time signature. It includes various musical notations such as notes, rests, beams, and dynamic markings like "mf" and "f". The piece concludes with a double bar line and the instruction "fine".

concerto *gymnasia* *La font de l'arbre mentider* *Jl. Rabau* *Sardanne*

Handwritten musical score for "La font de l'arbre mentider" by J. Rabau. The score is written on ten staves with a treble clef and a key signature of one sharp (F#). The time signature is 4/4. The music features various rhythmic patterns, including eighth and sixteenth notes, and rests. There are several measures with a double bar line and a repeat sign. The score ends with a double bar line and the words "PER. FINALE" written above the final measure. The handwriting is in cursive and the paper shows signs of age and wear.

trumpet *promata* La font de l'arbre mentides *Palau* *sardana*



per final

Trombo

morata

La font de l'arbre mentides

Palau

sardana

Handwritten musical score for Trombone, titled "La font de l'arbre mentides" by Palau, identified as a sardana. The score is written on seven staves. It begins with a key signature of one flat (Bb) and a 2/4 time signature. The notation includes various musical symbols such as notes, rests, beams, and slurs. Dynamic markings like "mf" (mezzo-forte) and "p" (piano) are present. There are also some handwritten annotations like "claps" and "2 3 4 5 6 7". The score ends with a double bar line on the seventh staff, followed by two empty staves at the bottom of the page.

Fiscorn

J. Palau

La font de l'arbre mentidet

ymorata

zardana

Handwritten musical score for Fiscorn, J. Palau's "La font de l'arbre mentidet". The score is written on ten staves, featuring various musical notations including notes, rests, and dynamic markings. The key signature is one sharp (F#), and the time signature is 4/4. The score includes several measures with dynamic markings such as *mf*, *p*, *f*, and *mf solo*. The notation includes many accidentals (sharps and naturals) and some complex rhythmic patterns. The score concludes with a double bar line and a final measure.

known

Andante

Ca font de l'arbre mentider *Jh. Palau* - *Jurdana* -

Handwritten musical score for "Ca font de l'arbre mentider" by Jh. Palau, Jurdana. The score is written on ten staves. The first staff is in bass clef with a 4/4 time signature. The second staff is in treble clef. The third staff is in bass clef. The fourth staff is in treble clef. The fifth staff is in bass clef. The sixth staff is in treble clef. The seventh staff is in bass clef. The eighth staff is in treble clef. The ninth staff is in bass clef. The tenth staff is in treble clef. The score includes various musical notations such as notes, rests, beams, and dynamic markings like "mf", "p", and "f". There are also some handwritten annotations and a final double bar line at the end of the tenth staff.

13047 *ph. Palace*

LA FONT DE L'ARBRE MENTIDER

moderata
Jardana

Handwritten musical score for the piece "LA FONT DE L'ARBRE MENTIDER". The score is written on ten staves, with the first two staves containing a key signature change from B-flat to B-natural. The tempo is marked "moderata" and the style is "Jardana". The score includes various musical notations such as notes, rests, and dynamic markings like "mf" and "f". There are also handwritten annotations like "Cleggo" and "1 2 3" above the staves. The piece concludes with a double bar line and a final chord.