

CAPVESPRES

SARDANA

DE

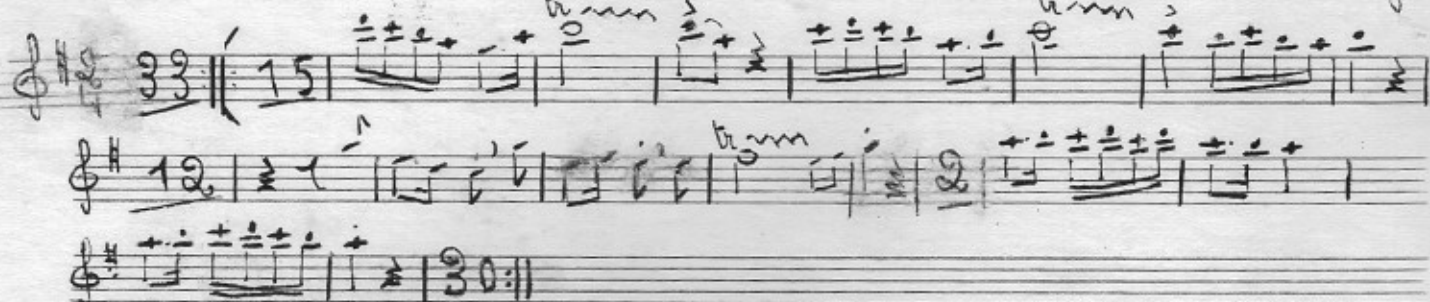
JOSEP M. VALLES i AGRAMUNT

31-4-1980

Flabiol

Capvespre

Josep M. Valles i Agramunt



Foble 1^aCaprespreJosep M^e Vallès Agramunt

amb melangia

allegre

molto

decidit

solo caprespre

cresc.

molto

f.

Foble 2^aCaprespreJosep M^e Vallès Agramunt

amb melangia

allegre

molto

decidit

molto

f.

16

3

16

Canon 1^a

Caprespe

Josep m^e Vallés Agramunt

amb melangia

alegre

Decidit

solo molt expressiu

mogut

Canon 2^a

Caprespe

Josep m^e Vallés Agramunt

amb melangia

alegre

Decidit

expressiu

mogut

Trompeta 1^{ra}

Caprespre

Josep M^e Vallès Agramunt

amb melangia

Handwritten musical score for Trompeta 1^{ra}, Caprespre, by Josep M^e Vallès Agramunt. The score is in G major (one sharp) and 2/4 time. It consists of eight staves of music. The first staff has a '4' below the first measure. The second staff has a 'p.' (piano) marking. The third staff has a '8' below the first measure and a 'Decidit' marking at the end. The fourth staff has a 'p.' marking. The fifth staff has a 'ritmat' marking. The sixth staff has a '3' below the first measure and a 'ritmat' marking. The seventh staff has a 'ritmat' marking. The eighth staff has a 'ritmat' marking. The score ends with a double bar line.

Trompeta 2^a

Caprespre

Josep M^e Vallès Agramunt

amb melangia

Handwritten musical score for Trompeta 2^a, Caprespre, by Josep M^e Vallès Agramunt. The score is in G major (one sharp) and 2/4 time. It consists of eight staves of music. The first staff has a '4' below the first measure. The second staff has a 'p.' (piano) marking. The third staff has a '8' below the first measure and a 'Decidit' marking at the end. The fourth staff has a 'p.' marking. The fifth staff has a 'ritmat' marking. The sixth staff has a '15' below the first measure and a 'ritmat' marking. The seventh staff has a 'ritmat' marking. The eighth staff has a 'ritmat' marking. The score ends with a double bar line.

Ensemble

Caprespre

Josep M^a Vallés Agrament

amb melangia

Fiscorn 1^a

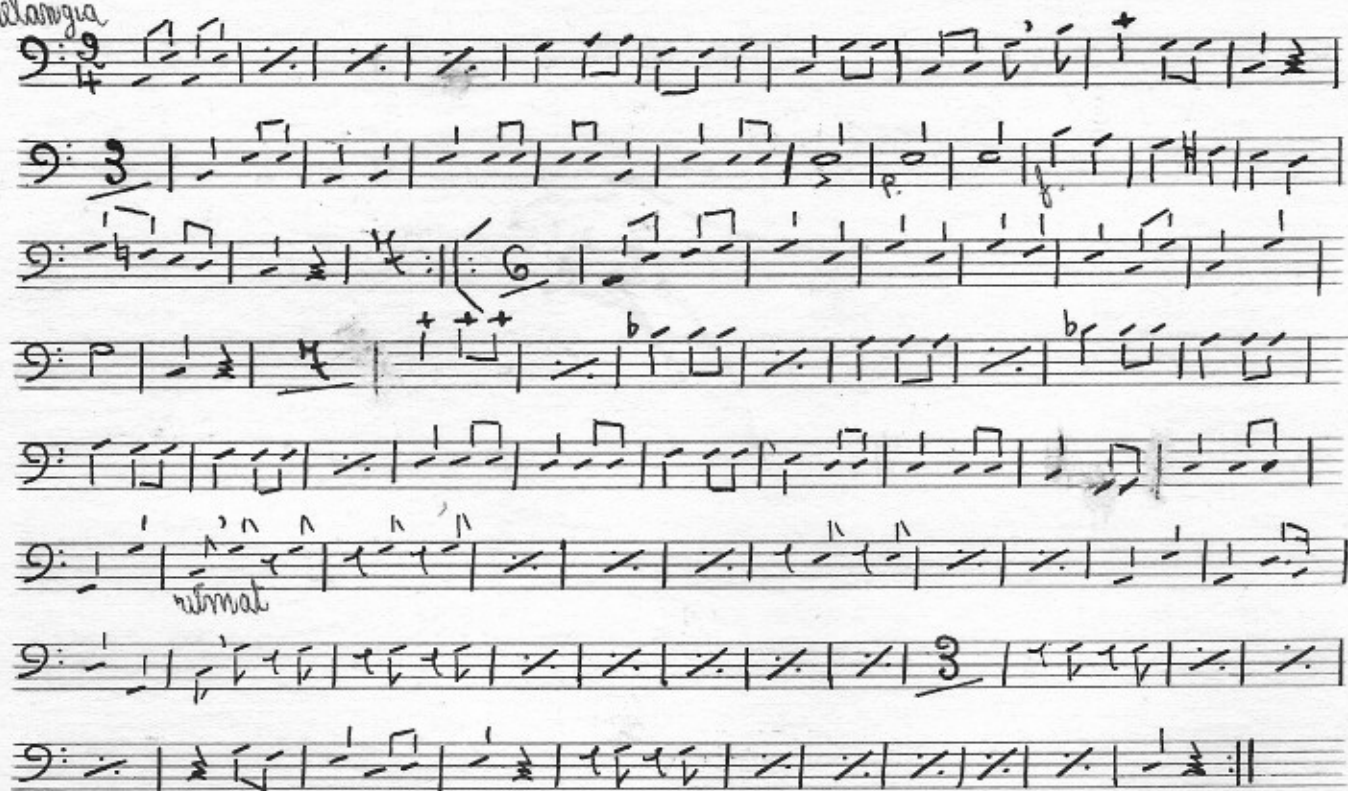
Caprespre

Josep M^a Vallés Agrament

amb melangia

Fiscorn 2^aCaprespreJosep 91^a Vallès Agramunt

Amb melangia



Contrabaix

CaprespreJosep 91^a Vallès Agramunt

Amb melangia

