

EN MANEL I LA TERESA

Flabiol

Sigfrid Galbany

f *mf*

12 ① 16 4 1. 2. *mf*

41 *f* *trill*

53 ② 18 ③ 3 *mp*

83 3 *f* *trill*

99 ④

108 3 *mf* 1. 2.

EN MANEL I LA TERESA

Tible 1

Sigfrid Galbany

f *mf*

12 ① 16 4 1. 2. *mf*

41 *f*

53 2 ② 18 ③ *mp*

82

94 2 *f* ④

107 3 *mf* 1. 2.

EN MANEL I LA TERESA

Tible 2

Sigfrid Galbany

12 16 4 1. 2. *f* *mf*

41 *f*

53 2 18 3 *mp*

82

94 2 *f* 4

106 3 1. 2. *mf*

EN MANEL I LA TERESA

Tenora 1

Sigfrid Galbany

13 ^① *mp* *mf*

24 1.

36 2. 16 ^② *mp*

61

71 ^③ 19 *f* *tr*

100 ^④

109 3. 1. 2.

EN MANEL I LA TERESA

Tenora 2

Sigfrid Galbany

14 ^① 8 *mf* *f* *mf*

37 *mf* *f*

50 2 ^② 18 2 ^③ *mp*

82 3 *f*

96 *tr* ^④

108 1 2

3

EN MANEL I LA TERESA

Trompeta 1

Sigfrid Galbany

f *mf*

11 3 ① 8 *mp*

30 2 1. 2. *f* *mp* *mf*

44 6 ② 18 2 ③ *f* *mp*

79

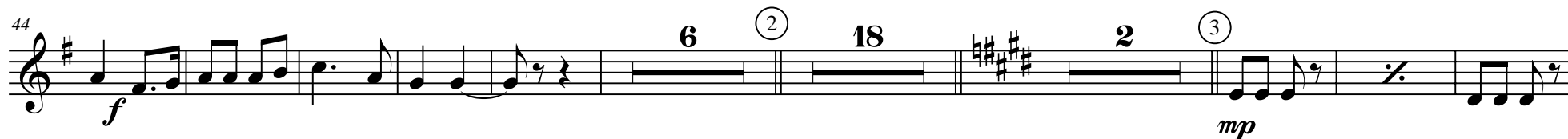
91 3 2 ④ 2 *f*

107 2 2 *mf* 1. 2.

EN MANEL I LA TERESA

Trompeta 2

Sigfrid Galbany



EN MANEL I LA TERESA

Trombó

Sigfrid Galbany

15

28

57

71

87

106

f *mf* *mp* *f* *p* *mf* *f*

1 2 3 4 6 8

EN MANEL I LA TERESA

Fiscorn 1

Sigfrid Galbany

f *mf* *mp*

15 *f*

31 *mf* *f*

46 *mp*

65 *mf* *p* *mp*

93 *f*

106

EN MANEL I LA TERESA

Fiscorn 2

Sigfrid Galbany

1. *f* *mf* *mp*

15 *f* *mp*

33 *mf* *f*

49 *mp*

67 *mf* *p* *mp*

97 *f*

110

1. 2.

EN MANEL I LA TERESA

Contrabaix

Sigfrid Galbany

arc *f* *mf* *mp* ①

16 2

30 pizz. *f* arc *mp* pizz. 1. 2. *mf* arc

43 *f* 2 pizz. 2 ② arc *mp*

59 2 *mf*

73 pizz. *p* ③

87 2 *f* 2 ④

102 4 1. 2.

EN MANEL I LA TERESA

Sigfrid Galbany

The image displays a page from a musical score for the piece 'L'Espresso' by Sergei Prokofiev. The score is written for a large ensemble, including woodwinds, brass, and strings. The instruments listed on the left are Flabiol, Tible 1, Tible 2, Tenora 1, Tenora 2, Trompeta 1, Trompeta 2, Trombó, Fiscorn 1, Fiscorn 2, and Contrabaix. The music is in 2/4 time. The score features various musical notations, including notes, rests, and dynamic markings such as *f* (forte), *mf* (mezzo-forte), and *mp* (mezzo-piano). The Flabiol and Tible parts are in treble clef, while the Trombó, Fiscorn, and Contrabaix parts are in bass clef. The Tenora parts are in treble clef with a key signature of one sharp (F#). The score is divided into measures by vertical bar lines, and the overall structure is organized into systems.

En Manel i la Teresa

57

Flb.

Tib. 1

Tib. 2

Ten. 1

Ten. 2

57

Tpta. 1

Tpta. 2

Tb6.

Fisc. 1

Fisc. 2

57

Cb.

mf

mf

mf

mf

A musical score for a large ensemble. The score is divided into two systems. The first system includes Flute (Flb.), two Timpani (Tib. 1, Tib. 2), two Tenors (Ten. 1, Ten. 2), and two Trumpets (Tpta. 1, Tpta. 2). The second system includes Trombone (Tb6.), two Fagots (Fisc. 1, Fisc. 2), and a Contrabass (Cb.). The key signature has one sharp (F#). The time signature is not explicitly shown but appears to be 4/4. The score features various musical notations including rests, eighth notes, quarter notes, and half notes. There are several slurs and ties. The Trombone, Fagot, and Contrabass parts have a 'mf' (mezzo-forte) dynamic marking with a crescendo hairpin. The page number '4' is centered at the bottom.

73

3

Fib.

Tib. 1

Tib. 2

Ten. 1

Ten. 2

Tpta. 1

Tpta. 2

Tb6.

Fisc. 1

Fisc. 2

Cb.

mp

mp

mp

p

mf

p

p

p

pizz.

A musical score for a large ensemble, starting at measure 73. The score includes parts for Flute (Fib.), two Tibes (Tib. 1, Tib. 2), two Tenors (Ten. 1, Ten. 2), two Trumpets (Tpta. 1, Tpta. 2), Trombone (Tb6.), two Fagots (Fisc. 1, Fisc. 2), and a Contrabass (Cb.). The key signature has three sharps (F#, C#, G#). The Flute, Tibes, and Tenor 2 parts begin with a mezzo-piano (*mp*) dynamic. The Trombone part starts with a piano (*p*) dynamic, followed by a mezzo-forte (*mf*) section. The Fagots and Contrabass parts also start with a piano (*p*) dynamic. The Contrabass part includes a pizzicato (*pizz.*) instruction. The score is marked with measure numbers 73 and 74, and a circled number 3 above the Flute staff. The music features various rhythmic patterns, including eighth and sixteenth notes, and rests.

En Manel i la Teresa

88

Flb.

Tib. 1

Tib. 2

Ten. 1

Ten. 2

88

Tpta. 1

Tpta. 2

Tbo.

Fisc. 1

Fisc. 2

88

Cb.

En Manel i la Teresa

This section of the score covers measures 104 to 112. It includes parts for Flute (Flb.), Tib. 1, Tib. 2, Ten. 1, Ten. 2, Tpta. 1, Tpta. 2, Tbo., Fisc. 1, Fisc. 2, and Cb. The woodwinds and strings play a melodic line with triplets and slurs. The brass section (Tpta. 1, Tpta. 2, Tbo., Fisc. 1, Fisc. 2, Cb.) provides harmonic support with various rhythmic patterns and rests. The score is in 4/4 time and features a key signature of two sharps (F# and C#).