

1277

trumbo

480

CERCANT L' AIMADA 31-91

NO DIA QUE NO SAP FLORAR

SADANES

Josep Serra

y Joaquim Serra

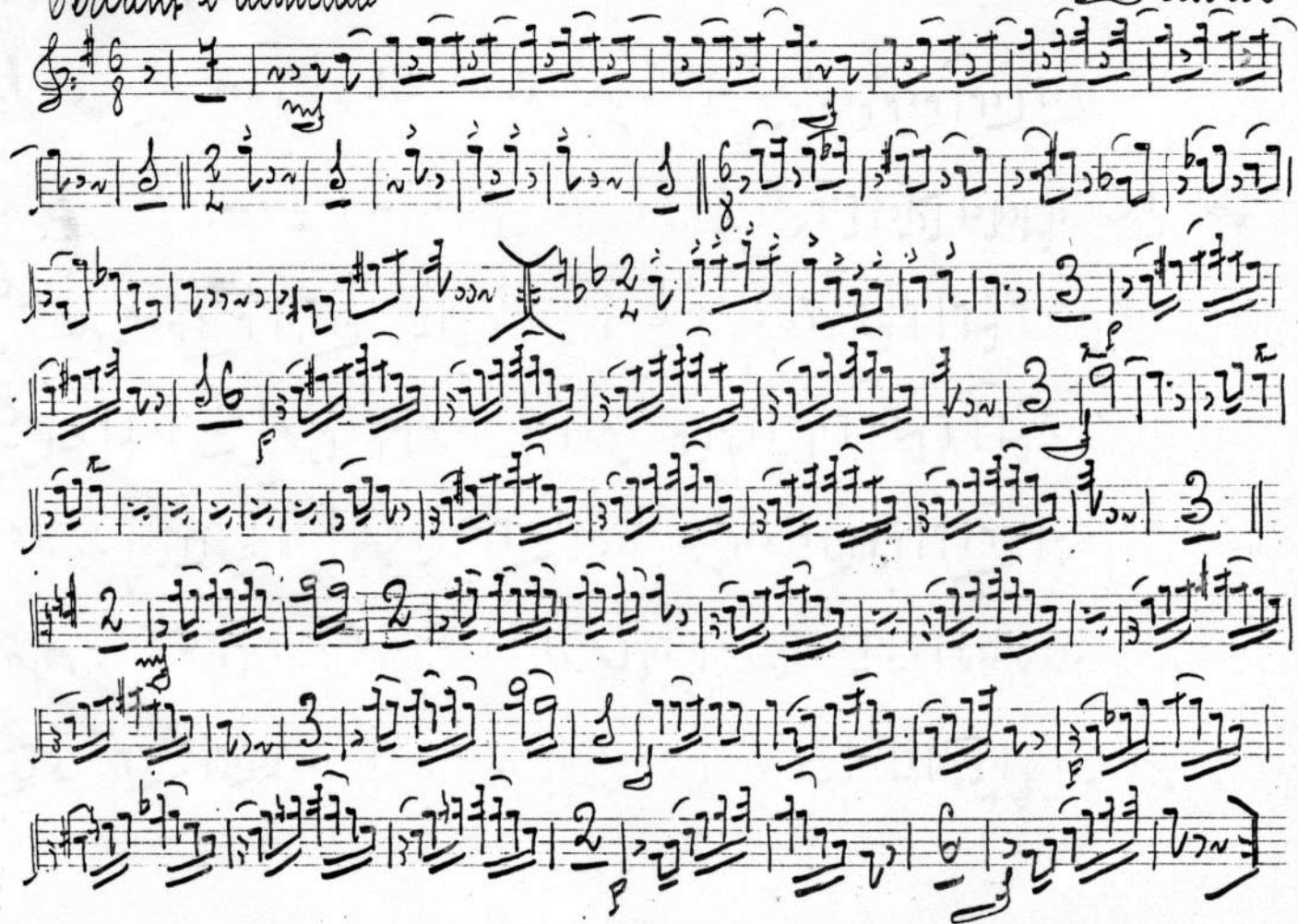
PROTECTOR

DE

FINES SIGAS

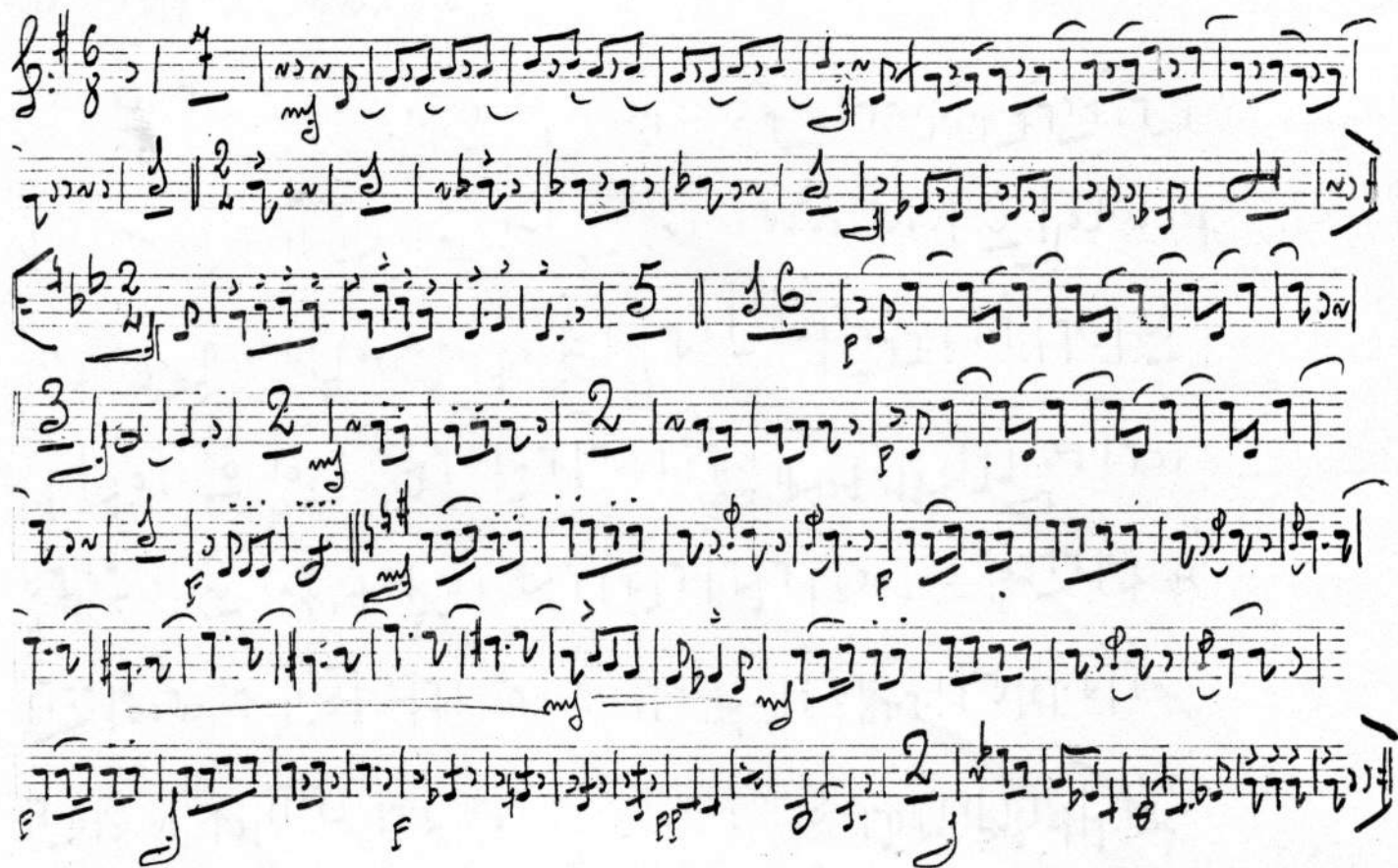
berant l'Amada

Almud



Servant l'aimada

Capite 2:



Berant l'Amada

Epole de

Handwritten musical score for a piece titled "Berant l'Amada". The score is written on a single staff with a treble clef and a key signature of one sharp (F#). The time signature is 6/8. The music is written in a style that appears to be a transcription of a vocal or instrumental melody. The notation includes various notes, rests, and bar lines, with some notes marked with a "2" indicating a second ending or a specific rhythmic value. The score is written in a cursive, handwritten style.

Bercant. L'Amada

Genore 8^e

Handwritten musical score for 'Bercant. L'Amada' in G major (one sharp) and 6/8 time. The score is written on seven staves. The first staff begins with a treble clef, a key signature of one sharp (F#), and a 6/8 time signature. The music features a variety of note values including eighth, sixteenth, and thirty-second notes, as well as rests. There are several dynamic markings: 'p' (piano) appears on the first, third, fourth, and sixth staves; 'pp' (pianissimo) appears on the second and fifth staves; and 'f' (forte) appears on the seventh staff. The score includes numerous slurs and ties, indicating phrasing and melodic lines. The notation is in a cursive, handwritten style typical of 19th-century musical manuscripts.

Berant l'Amada

more *20*



Perant l'Amada

Trumpet 2^o

Handwritten musical score for Trumpet 2, titled "Perant l'Amada". The score is written on seven staves, featuring a variety of musical notations including notes, rests, and dynamic markings. The key signature is one sharp (F#), and the time signature is 6/8. The score includes several dynamic markings: *p* (piano), *pp* (pianissimo), *f* (forte), and *ff* (fortissimo). There are also markings for *tr* (trill) and *trm* (trill mark). The notation is in a cursive, handwritten style, typical of a composer's sketch or a personal manuscript. The score begins with a treble clef and a key signature of one sharp (F#). The first staff contains a series of eighth notes and rests, followed by a trill. The second staff continues the melody with eighth notes and rests. The third staff features a trill and a series of eighth notes. The fourth staff contains a series of eighth notes and rests. The fifth staff features a trill and a series of eighth notes. The sixth staff contains a series of eighth notes and rests. The seventh staff concludes the piece with a series of eighth notes and rests.

Verwant L'Amada

Trumpet 2^e

Handwritten musical score for Trumpet 2, titled "Verwant L'Amada". The score is written on ten staves with a treble clef, a key signature of one sharp (F#), and a 6/8 time signature. The notation includes various musical symbols such as notes, rests, beams, and dynamic markings like "f" and "pp". There are also some handwritten annotations, including "tronde" and "8".

Perant l'Amada

le Trombone

Handwritten musical score for Trombone, titled "Perant l'Amada". The score is written on ten staves, organized into five systems of two staves each. The notation includes various musical symbols such as clefs, time signatures (8, 6, 2, 3, 8), key signatures (one flat, two flats), and dynamic markings (p, ff). The music features a mix of eighth, quarter, and half notes, along with rests and slurs. The final measure of the last staff is marked with a double bar line and a fermata.

berant l'Amada

Finis de.

Handwritten musical score for 'berant l'Amada'. The score is written on seven staves, featuring various musical notations including notes, rests, and dynamic markings. The notation is in a style characteristic of 19th-century manuscript notation, with some notes written as 'd' for 'do' and 'r' for 're'. The score includes several measures with dynamic markings such as *f*, *pp*, and *ppp*. The notation is written in a single system, with the staves connected by a horizontal line. The score concludes with a double bar line and the word 'Finis de.' written above the final staff.

berant l'aimada

Finon 2^e



berant l'Amada

le baix